



## 16-Bit, High-Speed, 2.7V to 5.5V *microPower* Sampling ANALOG-TO-DIGITAL CONVERTER

### FEATURES

- 16 Bits No Missing Codes (Full-Supply Range, High or Low Grade)
- Very Low Noise: 5LSB<sub>PP</sub>
- Excellent Linearity:  
±0.8LSB typ, ±1.5LSB max INL  
+0.7LSB typ, +1.25LSB max DNL  
±1mV max Offset  
±16LSB typ Gain Error
- *microPower*:  
10mW at 5V, 250kHz  
4mW at 2.7V, 200kHz  
2mW at 2.7V, 100kHz  
0.2mW at 2.7V, 10kHz
- MSOP-8 Package  
(SON-8 package available Q1, 2008; package size same as 3x3 QFN)
- Pin-Compatible with the [ADS8321](#)
- Serial (SPI™/SSI) Interface

### DESCRIPTION

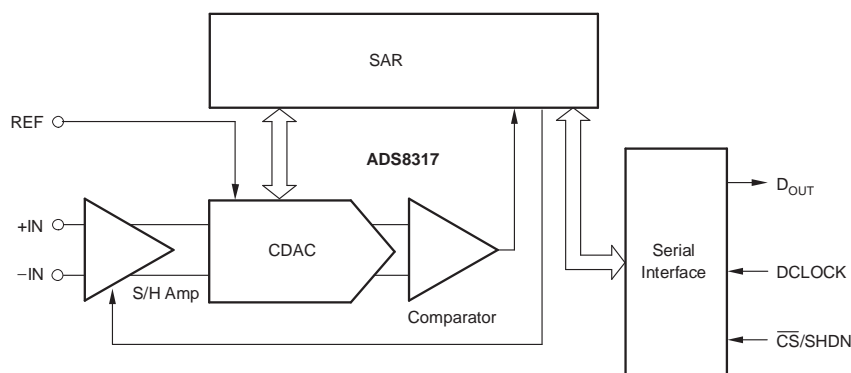
The ADS8317 is a 16-bit, sampling, analog-to-digital (A/D) converter specified for a supply voltage range from 2.7V to 5.5V. It requires very little power, even when operating at the full data rate. At lower data rates, the high speed of the device enables it to spend most of its time in the power-down mode. For example, the average power dissipation is less than 0.2mW at a 10kHz data rate.

The ADS8317 offers excellent linearity and very low noise and distortion. It also features a synchronous serial (SPI/SSI-compatible) interface and a differential input. The reference voltage can be set to any level within the range of 0.1V to  $V_{DD}/2$ .

Low power and small size make the ADS8317 ideal for portable and battery-operated systems. It is also an excellent fit for remote data-acquisition modules, simultaneous multichannel systems, and isolated data acquisition. The ADS8317 is available in MSOP-8 and SON-8 packages. The SON package size is the same as a 3x3 QFN package.

### APPLICATIONS

- Battery-Operated Systems
- Remote Data Acquisition
- Isolated Data Acquisition
- Simultaneous Sampling, Multichannel Systems
- Industrial Controls
- Robotics
- Vibration Analysis



Please be aware that an important notice concerning availability, standard warranty, and use in critical applications of Texas Instruments semiconductor products and disclaimers thereto appears at the end of this data sheet.

SPI is a trademark of Motorola, Inc.

All other trademarks are the property of their respective owners.



This integrated circuit can be damaged by ESD. Texas Instruments recommends that all integrated circuits be handled with appropriate precautions. Failure to observe proper handling and installation procedures can cause damage.

ESD damage can range from subtle performance degradation to complete device failure. Precision integrated circuits may be more susceptible to damage because very small parametric changes could cause the device not to meet its published specifications.

### ORDERING INFORMATION<sup>(1)</sup>

PRODUCT	MAXIMUM INTEGRAL LINEARITY ERROR (LSB) <sup>(2)</sup>	NO MISSING CODES ERROR (LSB)	PACKAGE-LEAD	PACKAGE DESIGNATOR	SPECIFIED TEMPERATURE RANGE	PACKAGE MARKING	ORDERING NUMBER	TRANSPORT MEDIA, QUANTITY
ADS8317I	±2	16	MSOP-8	DGK	–40°C to +85°C	D17	ADS8317IDGKT	Tape and Reel, 250
							ADS8317IDGKR	Tape and Reel, 2500
ADS8317IB	±1.5	16	MSOP-8	DGK	–40°C to +85°C	D17	ADS8317IBDGKT	Tape and Reel, 250
							ADS8317IBDGKR	Tape and Reel, 2500
ADS8317I <sup>(3)</sup>	±2	16	SON-8	DRB	–40°C to +85°C	D17	ADS8317IDRBT	Tape and Reel, 250
							ADS8317IDRBR	Tape and Reel, 2500
ADS8317IB <sup>(3)</sup>	±1.5	16	SON-8	DRB	–40°C to +85°C	D17	ADS8317IBDRBT	Tape and Reel, 250
							ADS8317IBDRBR	Tape and Reel, 2500

(1) For the most current package and ordering information, see the Package Option Addendum located at the end of this data sheet, or see the TI website at [www.ti.com](http://www.ti.com).

(2) **Maximum Integral Linearity Error** specifies a 5V power supply and 2.5V reference voltage.

(3) DRB (SON-8) package available Q1, 2008.

### ABSOLUTE MAXIMUM RATINGS<sup>(1)</sup>

Over operating free-air temperature range (unless otherwise noted).

	ADS8317	UNIT
Supply voltage, $V_{DD}$ to GND	–0.3 to +7	V
Analog input voltage <sup>(2)</sup>	–0.3 to $V_{DD} + 0.3$	V
Reference input voltage <sup>(2)</sup>	–0.3 to $V_{DD} + 0.3$	V
Digital input voltage <sup>(2)</sup>	–0.3 to $V_{DD} + 0.3$	V
Input current to any pin except supply	–20 to +20	mA
Power dissipation	See Dissipation Ratings Table	
Operating virtual junction temperature range, $T_J$	–40 to +150	°C
Operating free-air temperature range, $T_A$	–40 to +85	°C
Storage temperature range, $T_{STG}$	–65 to +150	°C
Lead Temperature 1.6mm (1/16 inch) from case for 10sec	+260	°C

(1) Stresses beyond those listed under Absolute Maximum Ratings may cause permanent damage to the device. These are stress ratings only, and functional operation of the device at these or any other conditions beyond those indicated under Recommended Operating Conditions is not implied. Exposure to absolute-maximum rated conditions for extended periods may affect device reliability.

(2) All voltage values are with respect to ground terminal.

### DISSIPATION RATINGS

PACKAGE	$R_{\theta JC}$	$R_{\theta JA}$	DERATING FACTOR ABOVE $T_A = +25^\circ\text{C}$	$T_A \leq +25^\circ\text{C}$ POWER RATING	$T_A = +70^\circ\text{C}$ POWER RATING	$T_A = +85^\circ\text{C}$ POWER RATING
DGK	+39.1°C/W	+206.3°C/W	4.847mW/°C	606mW	388mW	315mW
DRB	+5°C/W	+45.8°C/W	3.7mW/°C	370mW	204mW	148mW

## RECOMMENDED OPERATING CONDITIONS

		MIN	TYP	MAX	UNIT
Supply voltage, GND to $V_{DD}$	Low-voltage levels	2.7		3.6	V
	5V logic levels	4.5	5.0	5.5	V
Reference input voltage		1		$V_{DD}/2$	V
Analog input voltage	–IN to GND	–0.2		$V_{DD} + 0.2$	V
	+IN to GND	–0.2		$V_{DD} + 0.2$	V
	+IN – (–IN)	– $V_{REF}$		+ $V_{REF}$	V
Operating junction temperature, $T_J$		–40		+125	°C

## ELECTRICAL CHARACTERISTICS: $V_{DD} = +5V$

At –40°C to +85°C,  $V_{REF} = +2.5V$ , –IN = +2.5V,  $f_{SAMPLE} = 250kHz$ , and  $f_{CLK} = 24 \times f_{SAMPLE}$ , unless otherwise noted.

PARAMETER	TEST CONDITIONS	ADS8317I			ADS8317IB			UNIT	
		MIN	TYP	MAX	MIN	TYP	MAX		
ANALOG INPUT									
Full-scale range	FSR	+IN – (–IN)	–V <sub>REF</sub>	V <sub>REF</sub>	–V <sub>REF</sub>	V <sub>REF</sub>		V	
Absolute input range		+IN	–0.1	V <sub>DD</sub> + 0.1	–0.1	V <sub>DD</sub> + 0.1		V	
Input resistance	R <sub>ON</sub>	Hold		5		5		GΩ	
		Sampling		50	100	50	100	Ω	
Input capacitance		During sampling		24		24		pF	
Input leakage current				±50		±50		nA	
Differential input capacitance		+IN to –IN, during sampling		20		20		pF	
Full-power bandwidth	FSBW	f <sub>s</sub> sinewave, SINAD = 60dB		500		500		kHz	
DC ACCURACY									
Resolution			16		16			Bits	
No missing codes	NMC			16	16		16	Bits	
Integral linearity error	INL		–2	±1.5	+2	–1.5	±0.8	+1.5	LSB
Differential linearity error	DNL		–1	±1	+2	–1	+0.7, –0.5	+1.25	LSB
Offset error	V <sub>OS</sub>		–2	±0.75	+2	–1	±0.5	+1	mV
Offset error drift	TCV <sub>OS</sub>			±3			±3		μV/°C
Gain error	G <sub>ERR</sub>	Positive	–32	±16	+32	–32	±16	+32	LSB
		Negative	–32	±16	+32	–32	±16	+32	LSB
Gain error drift	TCG <sub>ERR</sub>			±0.1			±0.1		ppm/°C
Bipolar zero error			–2	±0.75	+2	–1	±0.5	+1	mV
Bipolar zero error drift				±3			±3		μV/°C
Noise				50			50		μVRMS
Power-supply rejection	PSRR	4.75V ≤ V <sub>DD</sub> ≤ 5.25V		1			1		LSB
SAMPLING DYNAMICS									
Conversion time (16 DCLOCKS)	t <sub>CONV</sub>	24kHz ≤ f <sub>CLK</sub> ≤ 6.0MHz	2.667		666.7	2.667		666.7	μs
Acquisition time (4.5 DCLOCKS)	t <sub>AQ</sub>	f <sub>CLK</sub> = 6.0MHz	0.75			0.75			μs
Throughput rate (22 DCLOCKS)					250			250	kSPS
Clock frequency			0.024		6.0	0.024		6.0	MHz

## ELECTRICAL CHARACTERISTICS: $V_{DD} = +5V$ (continued)

At  $-40^{\circ}C$  to  $+85^{\circ}C$ ,  $V_{REF} = +2.5V$ ,  $-IN = +2.5V$ ,  $f_{SAMPLE} = 250kHz$ , and  $f_{CLK} = 24 \times f_{SAMPLE}$ , unless otherwise noted.

PARAMETER	TEST CONDITIONS	ADS8317I			ADS8317IB			UNIT	
		MIN	TYP	MAX	MIN	TYP	MAX		
AC ACCURACY									
Total harmonic distortion	THD	5V <sub>PP</sub> sinewave at 2kHz	−102			−106			dB
		5V <sub>PP</sub> sinewave at 10kHz	−100			−104			dB
Spurious-free dynamic range	SFDR	5V <sub>PP</sub> sinewave at 2kHz	106			110			dB
		5V <sub>PP</sub> sinewave at 10kHz	104			109			dB
Signal-to-noise ratio	SNR	5V <sub>PP</sub> sinewave at 2kHz	89.6			90			dB
		5V <sub>PP</sub> sinewave at 10kHz	89.6			90			dB
Signal-to-noise + distortion	SINAD	5V <sub>PP</sub> sinewave at 2kHz	89.5			89.9			dB
		5V <sub>PP</sub> sinewave at 10kHz	89.4			89.8			dB
Effective number of bits	ENOB	5V <sub>PP</sub> sinewave at 2kHz	14.57			14.65			Bits
		5V <sub>PP</sub> sinewave at 10kHz	14.56			14.63			Bits
VOLTAGE REFERENCE INPUT									
Reference voltage		0.5	V <sub>DD</sub> /2		0.5	V <sub>DD</sub> /2		V	
Reference input resistance	$\overline{CS} = \text{GND}, f_{\text{SAMPLE}} = 0\text{Hz}$	5			5			GΩ	
	$\overline{CS} = V_{\text{DD}}$	5			5			GΩ	
Reference input capacitance		24			24			pF	
Reference input current	f <sub>S</sub> = 250kHz	35	52		35	52		μA	
	f <sub>S</sub> = 200kHz	25	38		25	38		μA	
	f <sub>S</sub> = 100kHz	10	15		10	15		μA	
	f <sub>S</sub> = 10kHz	1	2		1	2		μA	
	$\overline{CS} = V_{\text{DD}}$	0.1			0.1			μA	
DIGITAL INPUTS <sup>(1)</sup>									
Logic family		CMOS			CMOS				
High-level input voltage	V <sub>IH</sub>	0.7 × V <sub>DD</sub>	V <sub>DD</sub> + 0.3		0.7 × V <sub>DD</sub>	V <sub>DD</sub> + 0.3		V	
Low-level input voltage	V <sub>IL</sub>	−0.3	0.3 × V <sub>DD</sub>		−0.3	0.3 × V <sub>DD</sub>		V	
Input current	I <sub>IN</sub>	V <sub>I</sub> = V <sub>DD</sub> or GND		−50	+50			nA	
Input capacitance	C <sub>I</sub>	5			5			pF	
DIGITAL OUTPUTS <sup>(1)</sup>									
Logic family		CMOS			CMOS				
High-level output voltage	V <sub>OH</sub>	V <sub>DD</sub> = 4.5V, I <sub>OH</sub> = −100A		4.44	4.44			V	
Low-level output voltage	V <sub>OL</sub>	V <sub>DD</sub> = 4.5V, I <sub>OL</sub> = 100A		0.5	0.5			V	
High-impedance state output current	I <sub>OZ</sub>	$\overline{CS} = V_{\text{DD}}, V_{\text{I}} = V_{\text{DD}}$ or GND		−50	+50			nA	
Output capacitance	C <sub>O</sub>	5			5			pF	
Load capacitance	C <sub>L</sub>	30			30			pF	
Data format		Binary twos complement			Binary twos complement				

(1) Applies for 5.0V nominal supply:  $V_{DD}(\min) = 4.5V$  and  $V_{DD}(\max) = 5.5V$ .

**ELECTRICAL CHARACTERISTICS:  $V_{DD} = +2.7V$** 

At  $-40^{\circ}C$  to  $+85^{\circ}C$ ,  $V_{REF} = +1.25V$ ,  $-IN = 1.25V$ ,  $f_{SAMPLE} = 200kHz$ , and  $f_{CLK} = 24 \times f_{SAMPLE}$ , unless otherwise noted.

PARAMETER		TEST CONDITIONS	ADS8317I			ADS8317IB			UNIT	
			MIN	TYP	MAX	MIN	TYP	MAX		
ANALOG INPUT										
Full-scale range	FSR	+IN – (–IN)	–V <sub>REF</sub>		V <sub>REF</sub>		–V <sub>REF</sub>		V <sub>REF</sub>	V
Absolute input range		+IN	–0.1		V <sub>DD</sub> + 0.1		–0.1		V <sub>DD</sub> + 0.1	V
Input resistance	R <sub>ON</sub>	Hold	5				5			GΩ
		Sampling	100		150		100		150	Ω
Input capacitance		During sampling	24				24			pF
Input leakage current			±50				±50			nA
Differential input capacitance		+IN to –IN, during sampling	20				20			pF
Full-power bandwidth	FSBW	f <sub>S</sub> sinewave, SINAD = 60dB	1000				1000			kHz
DC ACCURACY										
Resolution			16				16			Bits
No missing codes	NMC		16		16		16			Bits
Integral linearity error	INL		–3	±2	+3		–2	±1.5	+2	LSB
Differential linearity error	DNL		–1	+1.5, –1	+2.5		–1	±1	+2	LSB
Offset error	V <sub>OS</sub>		–2	±1	+2		–1	±0.5	+1	mV
Offset error drift	TCV <sub>OS</sub>		±0.4				±0.4			μV/°C
Gain error	G <sub>ERR</sub>	Positive	–32	±16	+32		–32	±16	+32	LSB
		Negative	–32	±16	+32		–32	±16	+32	LSB
Gain error drift	TCG <sub>ERR</sub>		±0.15				±0.15			ppm/°C
Bipolar zero error			–2	±0.8	+2		–1	±0.4	+1	mV
Bipolar zero error drift			±0.2				±0.2			μV/°C
Noise			50				50			μVRMS
Power-supply rejection	PSRR	2.7V ≤ V <sub>DD</sub> ≤ 3.6V	1				1			LSB
SAMPLING DYNAMICS										
Conversion time (16 DCLOCKS)	t <sub>CONV</sub>	24kHz ≤ f <sub>CLK</sub> ≤ 4.8MHz	3.333		666.7		3.333		666.7	μs
Acquisition time (4.5 DCLOCKS)	t <sub>AQ</sub>	f <sub>CLK</sub> = 4.8MHz	0.9375				0.9375			μs
Throughput rate (22 DCLOCKS)					200				200	kSPS
Clock frequency			0.024		4.8		0.024		4.8	MHz
AC ACCURACY										
Total harmonic distortion	THD	2.5V <sub>PP</sub> sinewave at 2kHz	–104				–107			dB
		2.5V <sub>PP</sub> sinewave at 10kHz	–101				–106			dB
Spurious-free dynamic range	SFDR	2.5V <sub>PP</sub> sinewave at 2kHz	106				108			dB
		2.5V <sub>PP</sub> sinewave at 10kHz	104				107			dB
Signal-to-noise ratio	SNR	2.5V <sub>PP</sub> sinewave at 2kHz	84.8				85			dB
		2.5V <sub>PP</sub> sinewave at 10kHz	84.8				85			dB
Signal-to-noise + distortion	SINAD	2.5V <sub>PP</sub> sinewave at 2kHz	84.7				84.9			dB
		2.5V <sub>PP</sub> sinewave at 10kHz	84.7				84.8			dB
Effective number of bits	ENOB	2.5V <sub>PP</sub> sinewave at 2kHz	13.77				13.8			Bits
		2.5V <sub>PP</sub> sinewave at 10kHz	13.77				13.79			Bits
VOLTAGE REFERENCE INPUT										
Reference voltage			1		V <sub>DD</sub> /2		1		V <sub>DD</sub> /2	V
Reference input resistance		$\overline{CS}$ = GND, f <sub>SAMPLE</sub> = 0Hz	5				5			kΩ
		$\overline{CS}$ = V <sub>DD</sub>	5				5			GΩ
Reference input capacitance			20				20			pF
Reference input current		f <sub>S</sub> = 200kHz	9		14		9		14	μA
		f <sub>S</sub> = 100kHz	3		5		3		5	μA
		f <sub>S</sub> = 10kHz	0.5		1		0.5		1	μA
		$\overline{CS}$ = V <sub>DD</sub>	0.1				0.1			μA

**ELECTRICAL CHARACTERISTICS:  $V_{DD} = +2.7V$  (continued)**

At  $-40^{\circ}C$  to  $+85^{\circ}C$ ,  $V_{REF} = +1.25V$ ,  $-IN = 1.25V$ ,  $f_{SAMPLE} = 200kHz$ , and  $f_{CLK} = 24 \times f_{SAMPLE}$ , unless otherwise noted.

PARAMETER	TEST CONDITIONS	ADS8317I			ADS8317IB			UNIT
		MIN	TYP	MAX	MIN	TYP	MAX	
DIGITAL INPUTS <sup>(1)</sup>								
Logic family		LVCMOS			LVCMOS			
High-level input voltage	V <sub>IH</sub> V <sub>DD</sub> = 3.6V	2		V <sub>DD</sub> + 0.3	2		V <sub>DD</sub> + 0.3	V
Low-level input voltage	V <sub>IL</sub> V <sub>DD</sub> = 2.7V	−0.3		0.8	−0.3		0.3 × V <sub>DD</sub>	V
Input current	I <sub>IN</sub> V <sub>I</sub> = V <sub>DD</sub> or GND	−50		+50	−50		+50	nA
Input capacitance	C <sub>I</sub>	5			5			pF
DIGITAL OUTPUTS <sup>(1)</sup>								
Logic family		LVCMOS			LVCMOS			
High-level output voltage	V <sub>OH</sub> V <sub>DD</sub> = 2.7V, I <sub>OH</sub> = −100A	V <sub>DD</sub> − 0.2			V <sub>DD</sub> − 0.2			V
Low-level output voltage	V <sub>OL</sub> V <sub>DD</sub> = 2.7V, I <sub>OL</sub> = 100A	0.2			0.2			V
High-impedance state output current	I <sub>OZ</sub> $\overline{CS}$ = V <sub>DD</sub> , V <sub>I</sub> = V <sub>DD</sub> or GND	−50		+50	−50		+50	nA
Output capacitance	C <sub>O</sub>	5			5			pF
Load capacitance	C <sub>L</sub>	30			30			pF
Data format		Binary twos complement			Binary twos complement			

(1) Applies for 5.0V nominal supply:  $V_{DD}(\min) = 2.7V$  and  $V_{DD}(\max) = 3.6V$ .

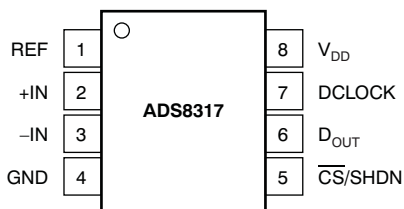
**ELECTRICAL CHARACTERISTICS: GENERAL**

At  $-40^{\circ}C$  to  $+85^{\circ}C$ ,  $-IN = GND$ , and  $f_{DCLOCK} = 24 \times f_{SAMPLE}$ , unless otherwise noted.

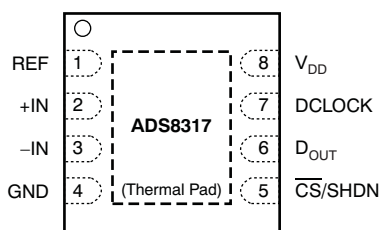
PARAMETER	TEST CONDITIONS	ADS8317I			ADS8317IB			UNIT
		MIN	TYP	MAX	MIN	TYP	MAX	
ANALOG INPUT								
Power supply	V <sub>DD</sub>	Low-voltage levels	2.7	3.6	2.7	3.6	V	
		5V logic levels	4.5	5.5	4.5	5.5	V	
Operating supply current	I <sub>DD</sub>	V <sub>DD</sub> = 2.7V, f <sub>S</sub> = 10kHz, f <sub>DCLOCK</sub> = 4.8MHz	0.065	0.085	0.065	0.085	mA	
		V <sub>DD</sub> = 2.7V, f <sub>S</sub> = 100kHz, f <sub>DCLOCK</sub> = 4.8MHz	0.7	1.0	0.7	1.0	mA	
		V <sub>DD</sub> = 2.7V, f <sub>S</sub> = 200kHz, f <sub>DCLOCK</sub> = 4.8MHz	1.4	2.0	1.4	2.0	mA	
		V <sub>DD</sub> = 5V, f <sub>S</sub> = 200kHz, f <sub>DCLOCK</sub> = 6MHz	1.5	2.5	1.5	2.5	mA	
		V <sub>DD</sub> = 5V, f <sub>S</sub> = 250kHz, f <sub>DCLOCK</sub> = 6MHz	2.0	3.0	2.0	3.0	mA	
Power-down supply current	I <sub>DD</sub>	V <sub>DD</sub> = 2.7V	0.1		0.1		μA	
		V <sub>DD</sub> = 5V	0.2		0.2		μA	
Power dissipation		V <sub>DD</sub> = 2.7V, f <sub>S</sub> = 10kHz, f <sub>DCLOCK</sub> = 4.8MHz	0.18	0.23	0.18	0.23	mW	
		V <sub>DD</sub> = 2.7V, f <sub>S</sub> = 100kHz, f <sub>DCLOCK</sub> = 4.8MHz	1.9	2.7	1.9	2.7	mW	
		V <sub>DD</sub> = 2.7V, f <sub>S</sub> = 200kHz, f <sub>DCLOCK</sub> = 4.8MHz	3.8	5.4	3.8	5.4	mW	
		V <sub>DD</sub> = 5V, f <sub>S</sub> = 200kHz, f <sub>DCLOCK</sub> = 6MHz	7.5	12.5	7.5	12.5	mW	
		V <sub>DD</sub> = 5V, f <sub>S</sub> = 250kHz, f <sub>DCLOCK</sub> = 6MHz	10	15	10	15	mW	
Power dissipation in power-down		V <sub>DD</sub> = 2.7V, $\overline{CS}$ = V <sub>DD</sub>	0.3		0.3		μW	
		V <sub>DD</sub> = 5V, $\overline{CS}$ = V <sub>DD</sub>	0.6		0.6		μW	

## PIN CONFIGURATION

**DGK PACKAGE  
MSOP-8  
(TOP VIEW)**



**DRB PACKAGE<sup>(1)(2)</sup>  
SON-8  
(TOP VIEW)**



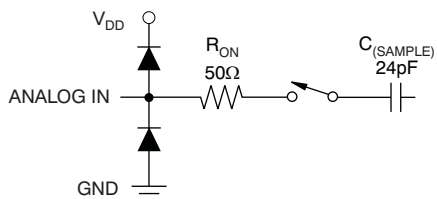
(1) DRB package (SON-8) available Q1, 2008.

(2) The DRB package thermal pad must be soldered to the printed circuit board for proper thermal and mechanical performance.

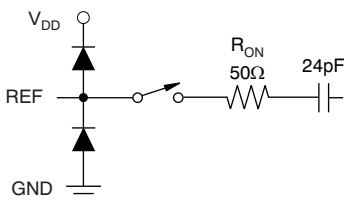
## TERMINAL FUNCTIONS

TERMINAL		I/O	DESCRIPTION
NAME	NO.		
REF	1	Analog input	Reference input
+IN	2	Analog input	Noninverting analog input
–IN	3	Analog input	Inverting analog input
GND	4	Power-supply connection	Ground
$\overline{\text{CS}}/\text{SHDN}$	5	Digital input	Chip select when low; Shutdown mode when high.
D <sub>OUT</sub>	6	Digital output	Serial output data word
DCLOCK	7	Digital input	Data clock synchronizes the serial data transfer and determines conversion speed.
V <sub>DD</sub>	8	Power-supply connection	Power supply

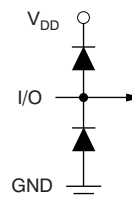
## Equivalent Input Circuits (V<sub>DD</sub> = 5.0V)



Diode Turn-On Voltage: 0.35V  
Equivalent Analog Input Circuit

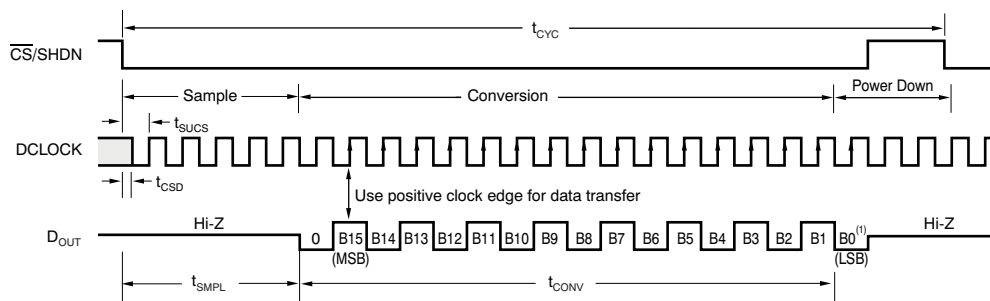


Equivalent Reference Input Circuit



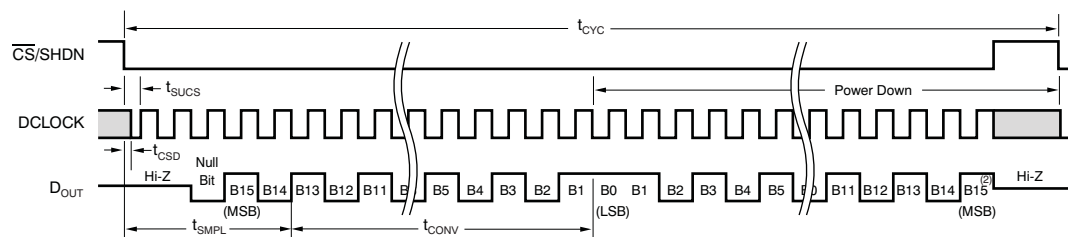
Equivalent Digital Input/Output Circuit

## TIMING INFORMATION

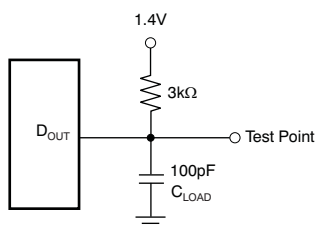


NOTE: (1) A minimum of 22 clock cycles are required for 16-bit conversion; 24 clock cycles are shown.

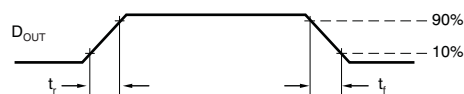
If  $\overline{\text{CS}}$  remains low at the end of conversion, a new data stream is shifted out with LSB-first data followed by zeroes indefinitely.



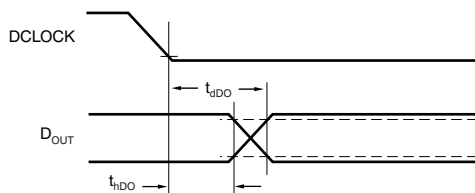
NOTE: (2) After completing the data transfer, if further clocks are applied with  $\overline{\text{CS}}$  low, the A/D converter will output zeroes indefinitely.



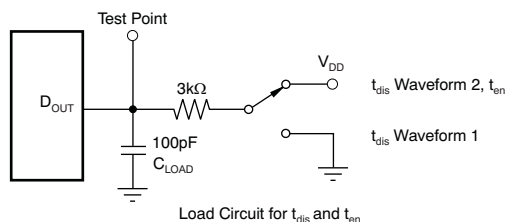
Load Circuit for  $t_{DQ}$ ,  $t_r$ , and  $t_f$



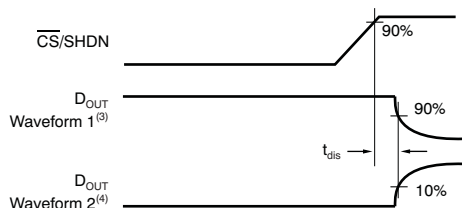
Voltage Waveforms for  $D_{OUT}$  Rise and Fall Times,  $t_r$ ,  $t_f$



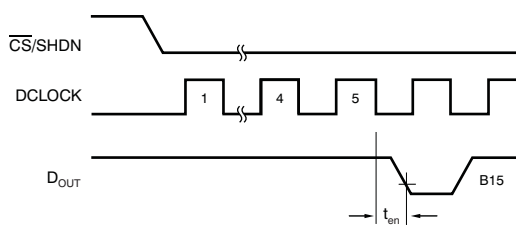
Voltage Waveforms for  $D_{OUT}$  Delay Times,  $t_{DQ}$



Load Circuit for  $t_{dis}$  and  $t_{en}$



Voltage Waveforms for  $t_{dis}$



Voltage Waveforms for  $t_{en}$

NOTES: (3) Waveform 1 is for an output with internal conditions such that the output is high unless disabled by the output control.

(4) Waveform 2 is for an output with internal conditions such that the output is low unless disabled by the output control.

Figure 1. Timing Diagrams

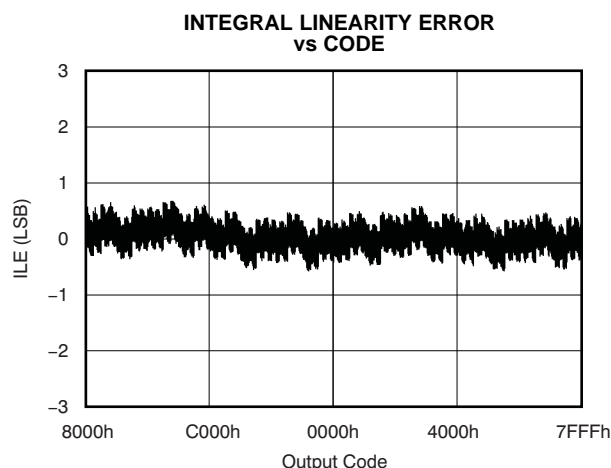


**TIMING INFORMATION (continued)****Timing Characteristics**

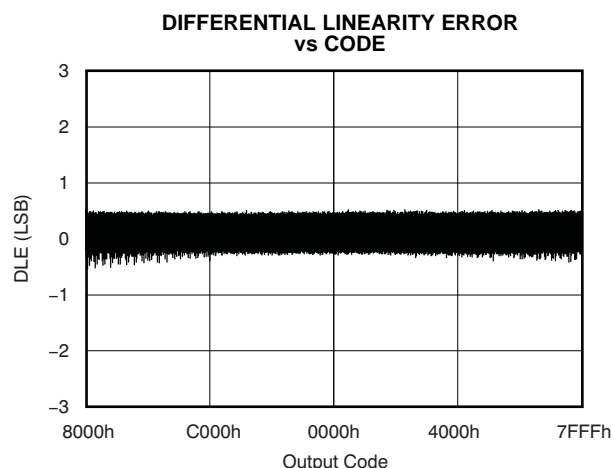
<b>SYMBOL</b>	<b>DESCRIPTION</b>	<b>MIN</b>	<b>TYP</b>	<b>MAX</b>	<b>UNIT</b>
$t_{\text{SMPL}}$	Analog input sample time	4.5		5.0	DCLOCKs
$t_{\text{CONV}}$	Conversion time		16		DCLOCKs
$t_{\text{CYC}}$	Complete cycle time	22			DCLOCKs
$t_{\text{CSD}}$	$\overline{\text{CS}}$ falling to DCLOCK low			0	ns
$t_{\text{SUCS}}$	$\overline{\text{CS}}$ falling to DCLOCK rising	20			ns
$t_{\text{HDO}}$	DCLOCK falling to current $\text{D}_{\text{OUT}}$ not valid	5	15		ns
$t_{\text{DIS}}$	$\overline{\text{CS}}$ rising to $\text{D}_{\text{OUT}}$ 3-state		70	100	ns
$t_{\text{EN}}$	DCLOCK falling to $\text{D}_{\text{OUT}}$ enabled		20	50	ns
$t_{\text{F}}$	$\text{D}_{\text{OUT}}$ fall time		5	25	ns
$t_{\text{R}}$	$\text{D}_{\text{OUT}}$ rise time		7	25	ns

# **TYPICAL CHARACTERISTICS: $V_{DD} = +5V$**

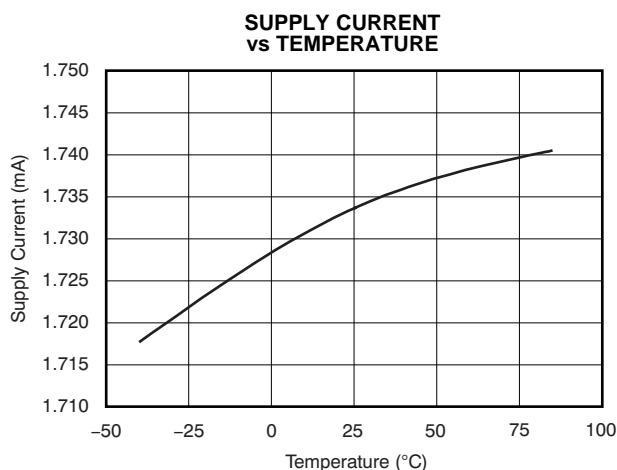
At  $T_A = 25^\circ\text{C}$ ,  $V_{REF} = 2.5V$ ,  $f_{SAMPLE} = 250\text{kHz}$ ,  $f_{CLK} = 24 \times f_{SAMPLE}$ , unless otherwise noted.



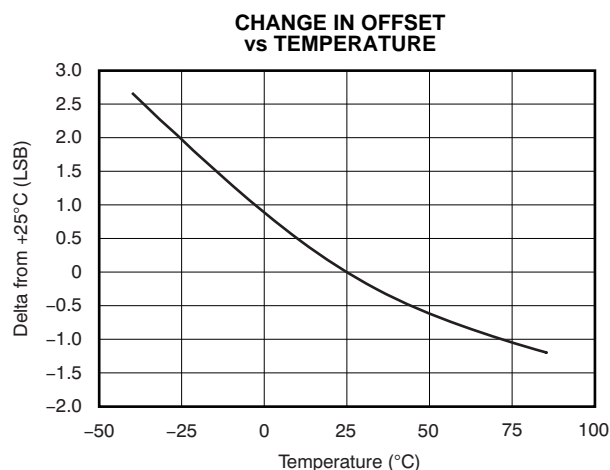
**Figure 2.**



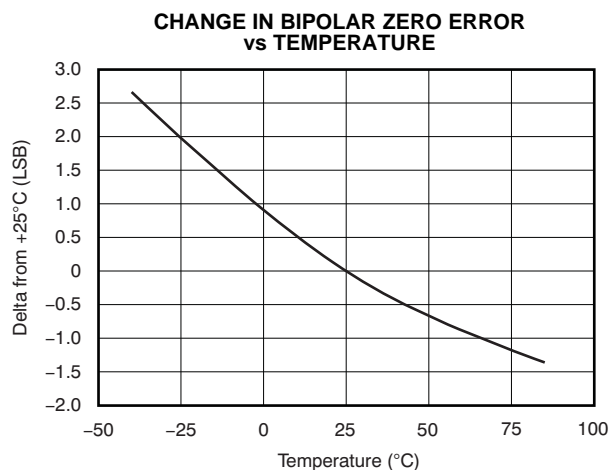
**Figure 3.**



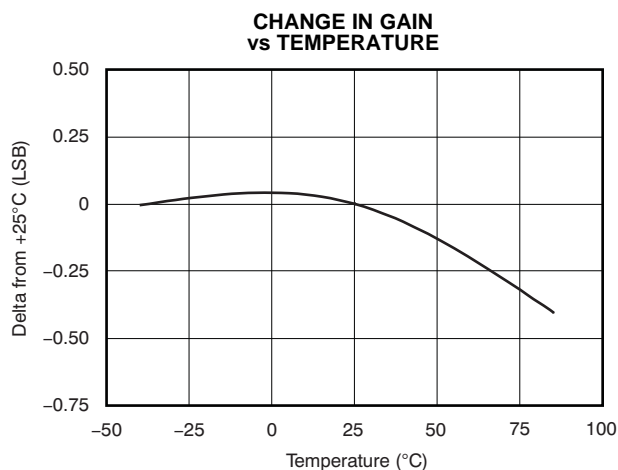
**Figure 4.**



**Figure 5.**



**Figure 6.**



**Figure 7.**

## TYPICAL CHARACTERISTICS: $V_{DD} = +5V$ (continued)

At  $T_A = 25^\circ\text{C}$ ,  $V_{REF} = 2.5V$ ,  $f_{SAMPLE} = 250\text{kHz}$ ,  $f_{CLK} = 24 \times f_{SAMPLE}$ , unless otherwise noted.

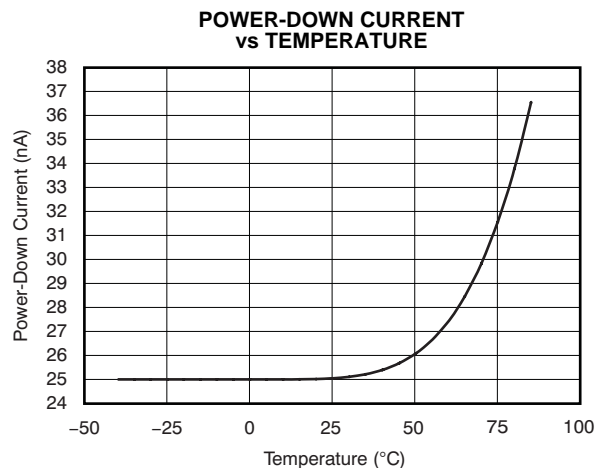


Figure 8.

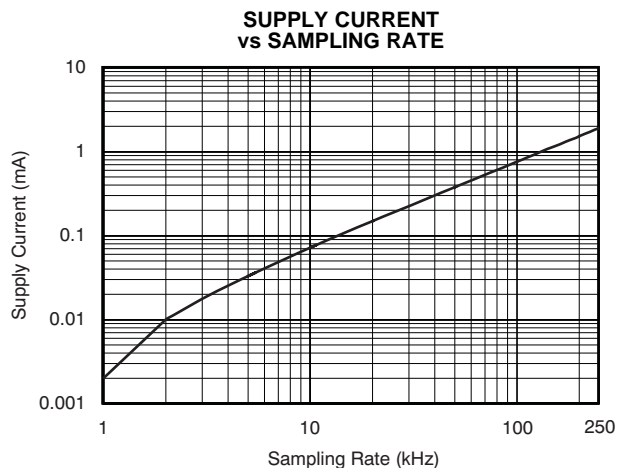


Figure 9.

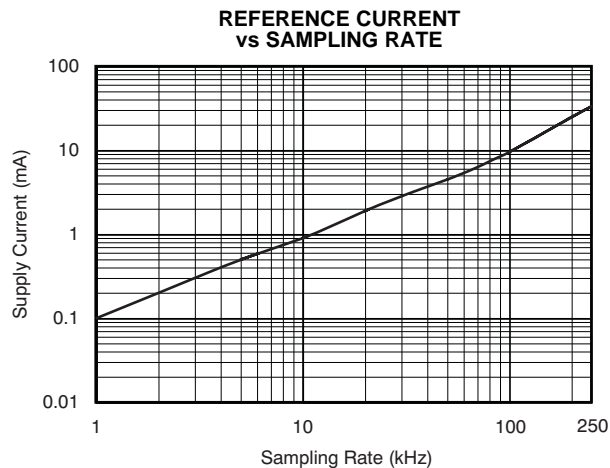


Figure 10.

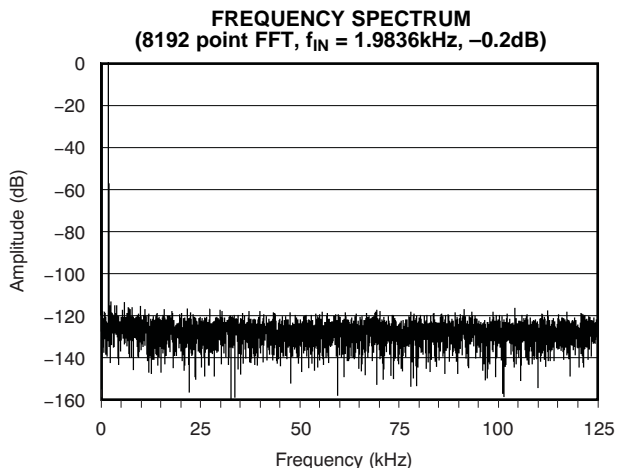


Figure 11.

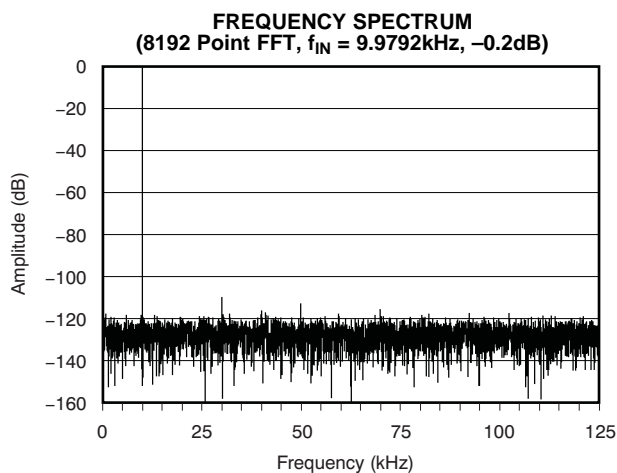


Figure 12.

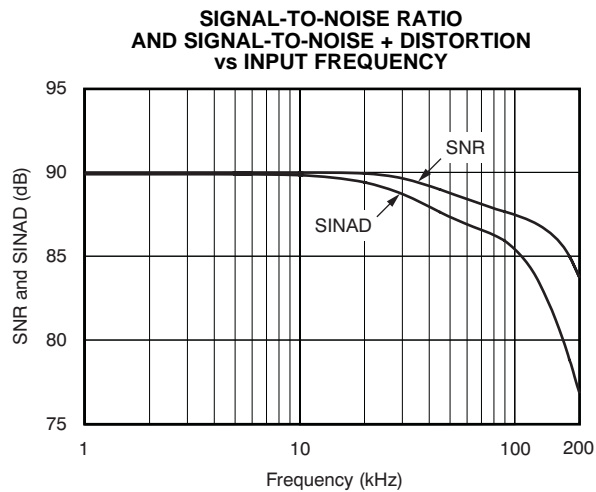
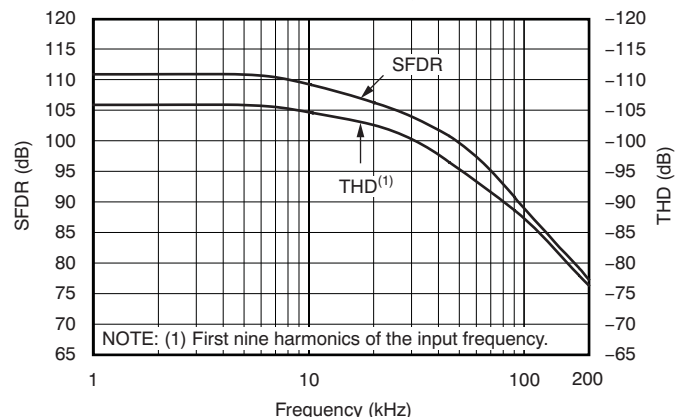


Figure 13.

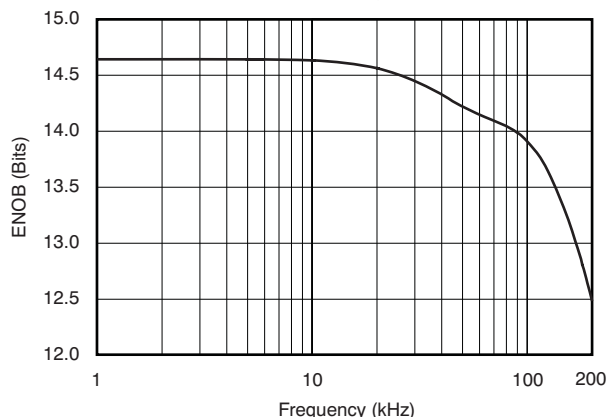
**TYPICAL CHARACTERISTICS:  $V_{DD} = +5V$  (continued)**

At  $T_A = 25^\circ\text{C}$ ,  $V_{REF} = 2.5V$ ,  $f_{SAMPLE} = 250\text{kHz}$ ,  $f_{CLK} = 24 \times f_{SAMPLE}$ , unless otherwise noted.

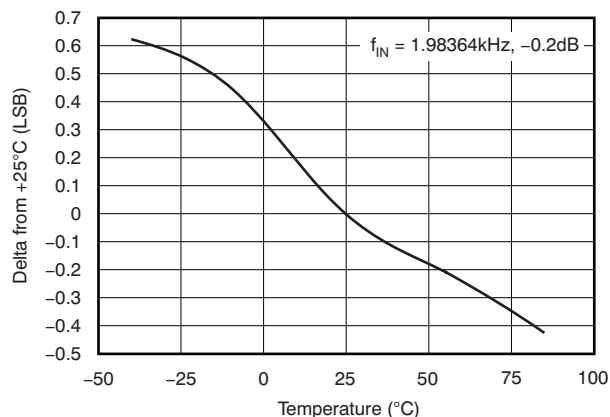
**SPURIOUS-FREE DYNAMIC RANGE  
AND TOTAL HARMONIC DISTORTION  
vs INPUT FREQUENCY**

**Figure 14.**

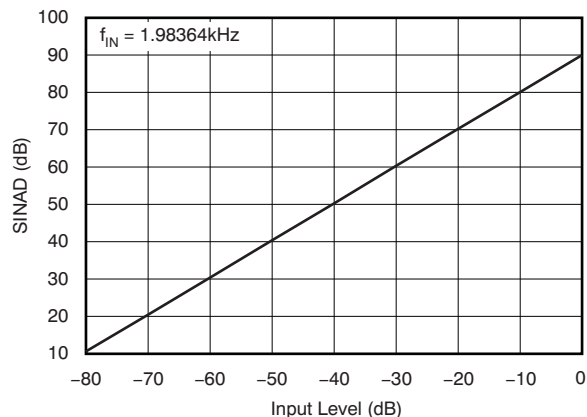
**EFFECTIVE NUMBER OF BITS  
vs INPUT FREQUENCY**

**Figure 15.**

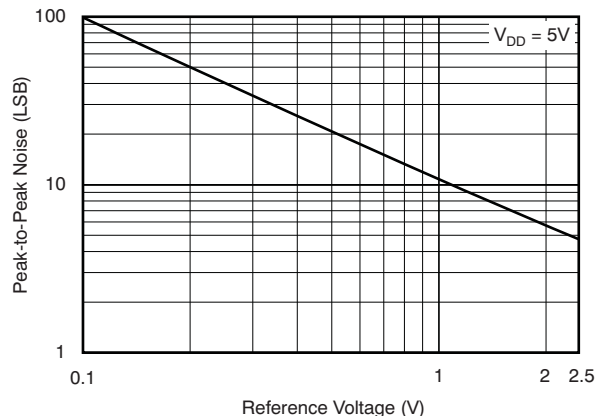
**CHANGE IN SIGNAL-TO-NOISE + DISTORTION  
vs TEMPERATURE**

**Figure 16.**

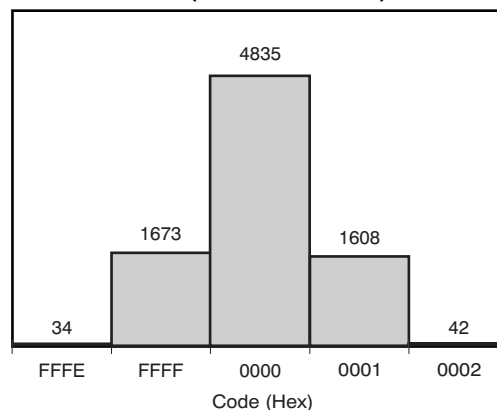
**CHANGE IN SIGNAL-TO-NOISE + DISTORTION  
vs INPUT LEVEL**

**Figure 17.**

**PEAK-TO-PEAK NOISE FOR A DC INPUT  
vs REFERENCE VOLTAGE**

**Figure 18.**

**OUTPUT CODE HISTOGRAM FOR A DC INPUT  
(8192 Conversions)**

**Figure 19.**

# **TYPICAL CHARACTERISTICS: $V_{DD} = +2.7V$**

At  $T_A = 25^\circ C$ ,  $V_{REF} = 1.25V$ ,  $f_{SAMPLE} = 200kHz$ ,  $f_{CLK} = 24 \times f_{SAMPLE}$ , unless otherwise noted.

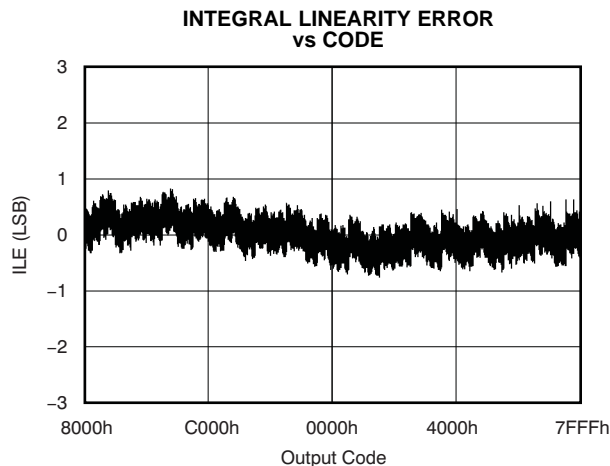


Figure 20.

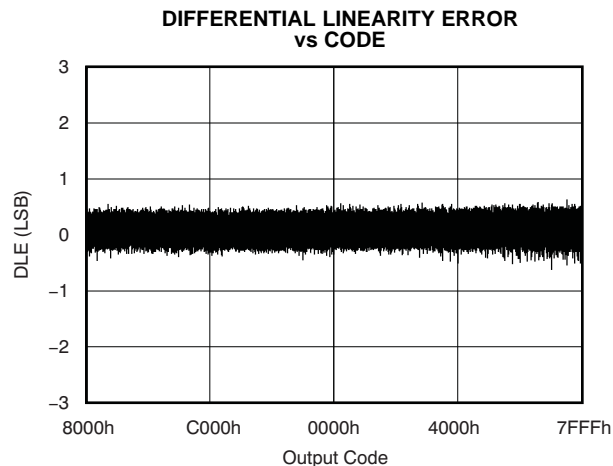


Figure 21.

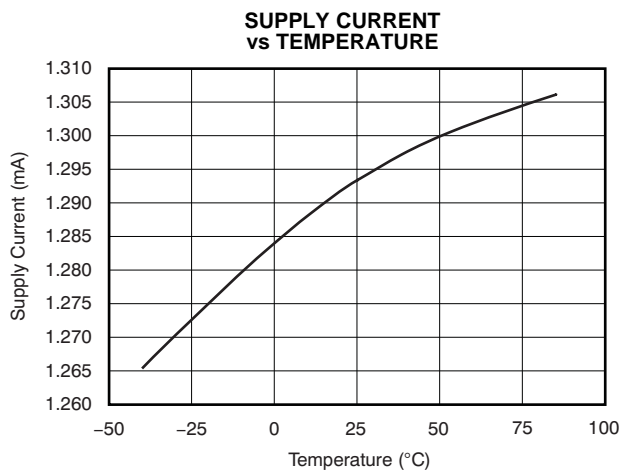


Figure 22.

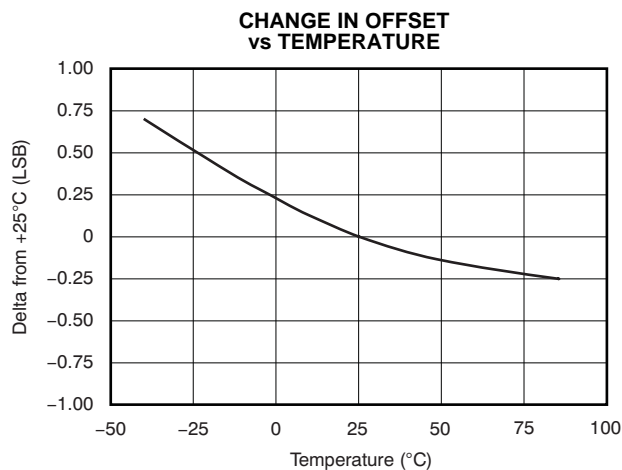


Figure 23.

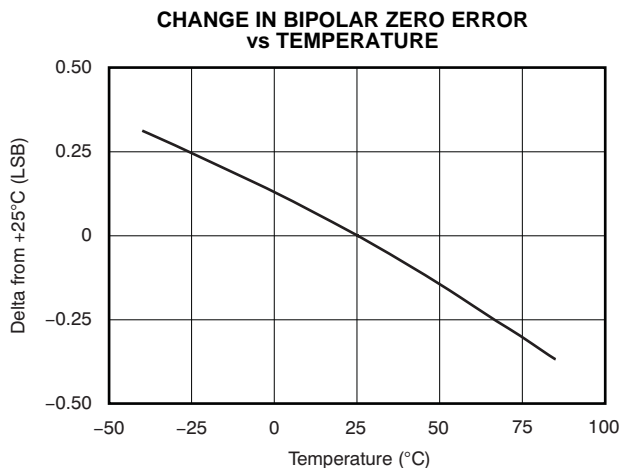


Figure 24.

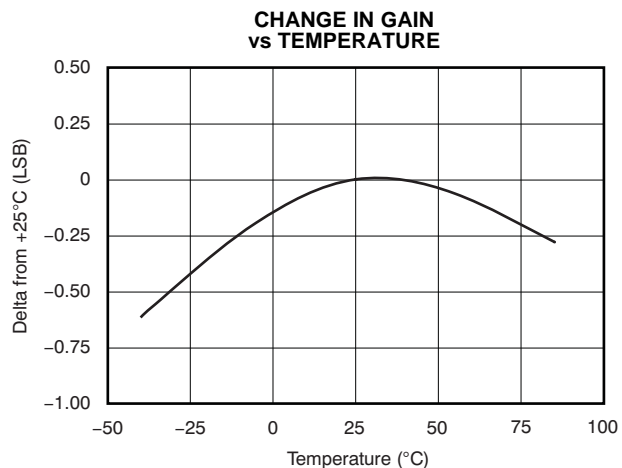
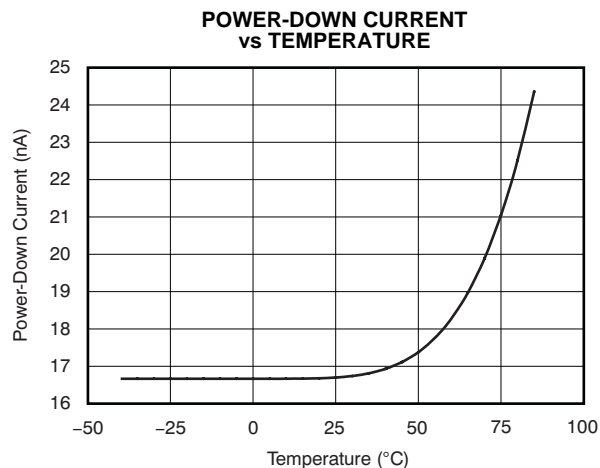
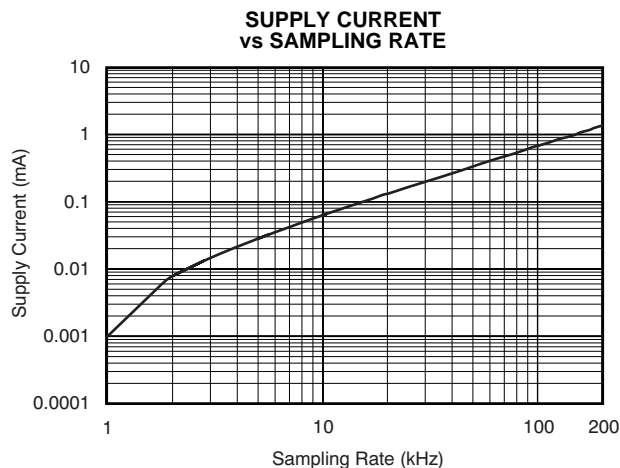
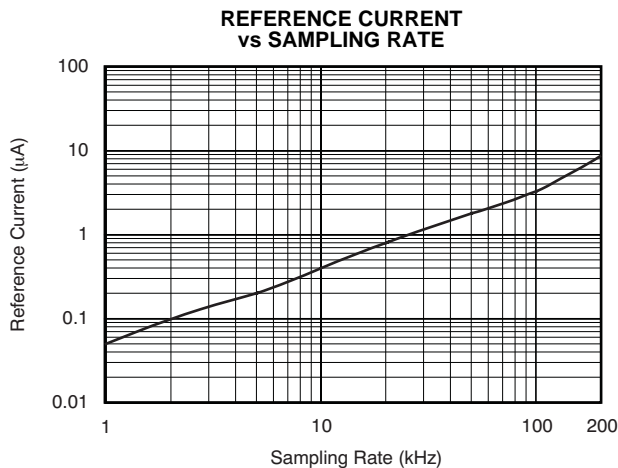
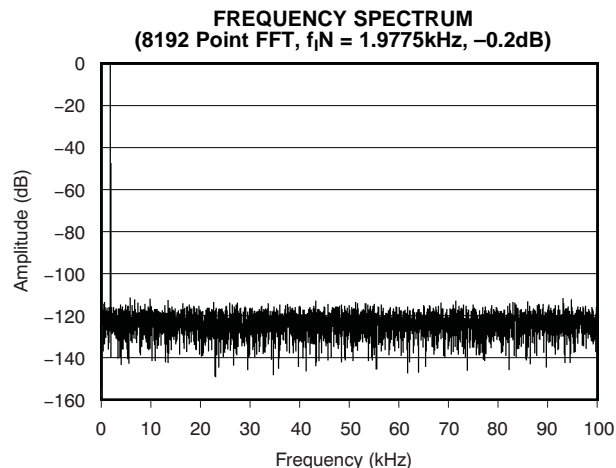
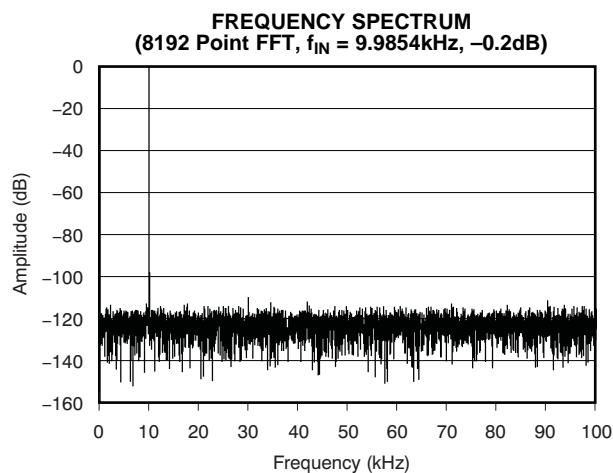
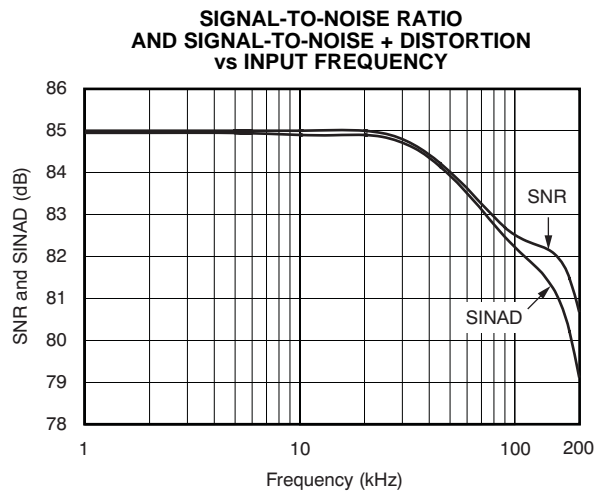


Figure 25.

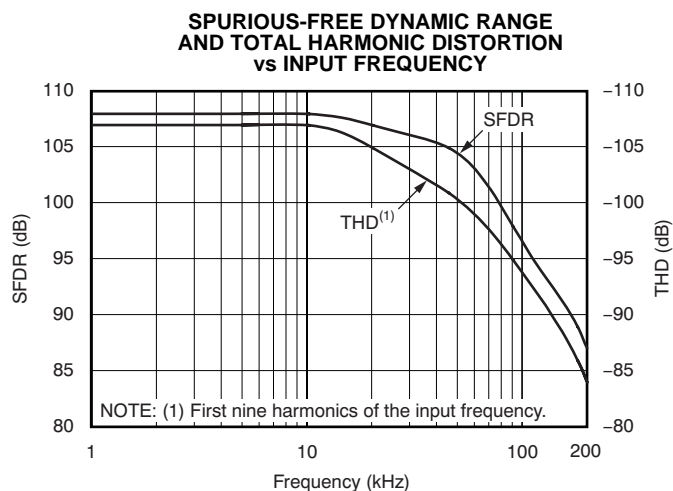
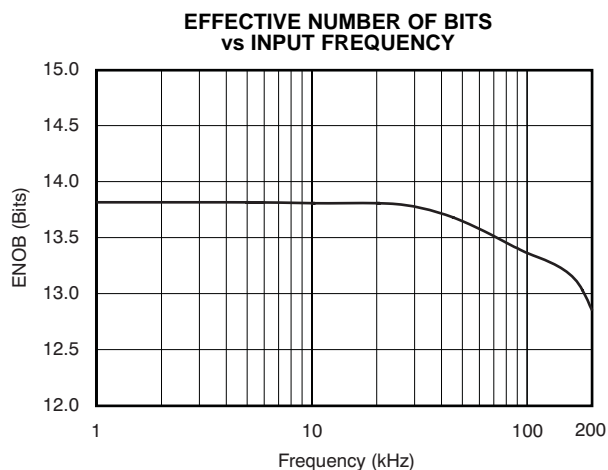
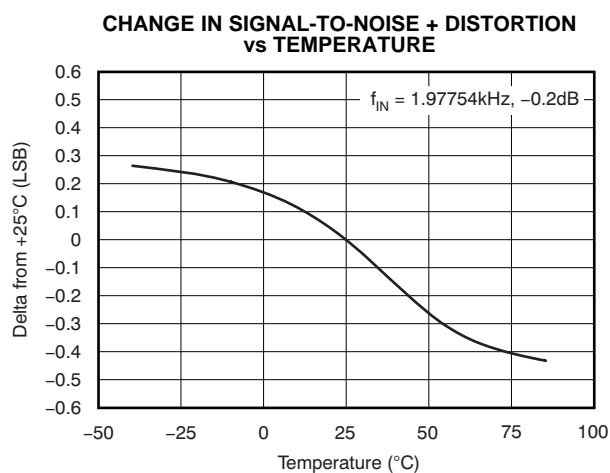
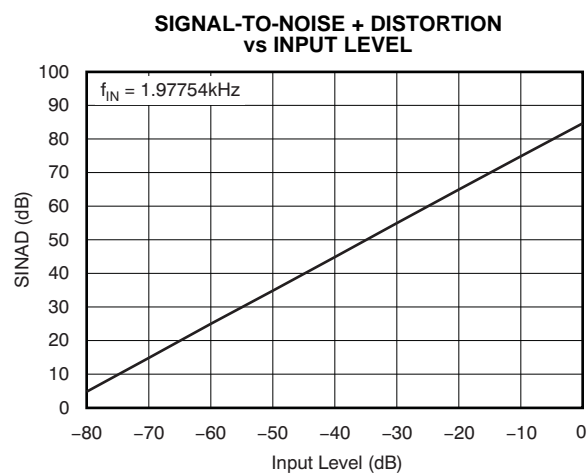
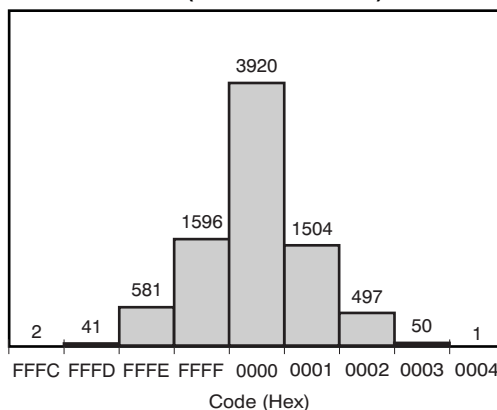
**TYPICAL CHARACTERISTICS:  $V_{DD} = +2.7V$  (continued)**

At  $T_A = 25^\circ C$ ,  $V_{REF} = 1.25V$ ,  $f_{SAMPLE} = 200kHz$ ,  $f_{CLK} = 24 \times f_{SAMPLE}$ , unless otherwise noted.

**Figure 26.****Figure 27.****Figure 28.****Figure 29.****Figure 30.****Figure 31.**

**TYPICAL CHARACTERISTICS:  $V_{DD} = +2.7V$  (continued)**

At  $T_A = 25^\circ\text{C}$ ,  $V_{REF} = 1.25V$ ,  $f_{SAMPLE} = 200\text{kHz}$ ,  $f_{CLK} = 24 \times f_{SAMPLE}$ , unless otherwise noted.

**Figure 32.****Figure 33.****Figure 34.****Figure 35.****OUTPUT CODE HISTOGRAM FOR A DC INPUT (8192 Conversions)****Figure 36.**

## THEORY OF OPERATION

The ADS8317 is a classic Successive Approximation Register (SAR) analog-to-digital (A/D) converter. The architecture is based on capacitive redistribution that inherently includes a sample-and-hold function. The converter is fabricated on a 0.6μ CMOS process. The architecture and fabrication process allow the ADS8317 to acquire and convert an analog signal at up to 250,000 conversions per second while consuming less than 10mW from  $V_{DD}$ .

Differential linearity for the ADS8317 is factory-adjusted via a package-level trim procedure. The state of the trim elements is stored in non-volatile memory and is continuously updated after each acquisition cycle, just prior to the start of the successive approximation operation. This process ensures that one complete conversion cycle always returns the part to its factory-adjusted state in the event of a power interruption.

The ADS8317 requires an external reference, an external clock, and a single power source ( $V_{DD}$ ). The external reference can be any voltage between 0.1V and  $V_{DD}/2$ . The value of the reference voltage directly sets the range of the analog input. The reference input current depends on the conversion rate of the ADS8317.

The external clock can vary between 24kHz (1kHz throughput) and 6.0MHz (250kHz throughput). The duty cycle of the clock is not significant, as long as the minimum high and low times are at least 200ns ( $V_{DD} = 4.75V$  or greater). The minimum clock frequency is set by the leakage on the internal capacitors to the ADS8317.

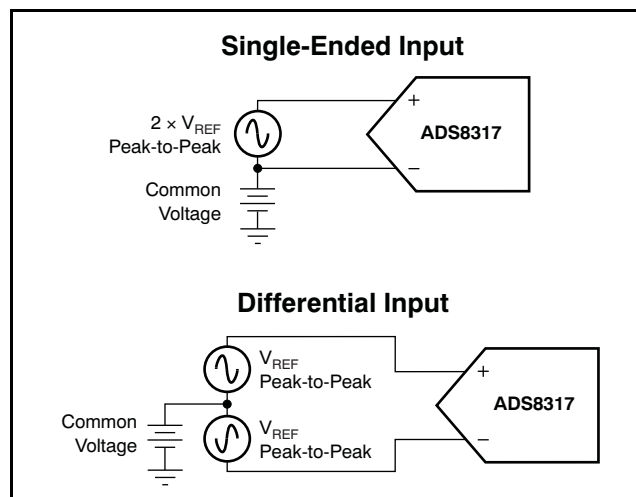
The analog input is provided to two input pins: +IN and –IN. When a conversion is initiated, the differential input on these pins is sampled on the internal capacitor array. While a conversion is in progress, both inputs are disconnected from any internal function.

The digital result of the conversion is clocked out by the DCLOCK input and is provided serially (most significant bit first) on the  $D_{OUT}$  pin.

The digital data that are provided on the  $D_{OUT}$  pin are for the conversion currently in progress—there is no pipeline delay. It is possible to continue to clock the ADS8317 after the conversion is complete and to obtain the serial data least significant bit first. See the *Digital Timing* section for more information.

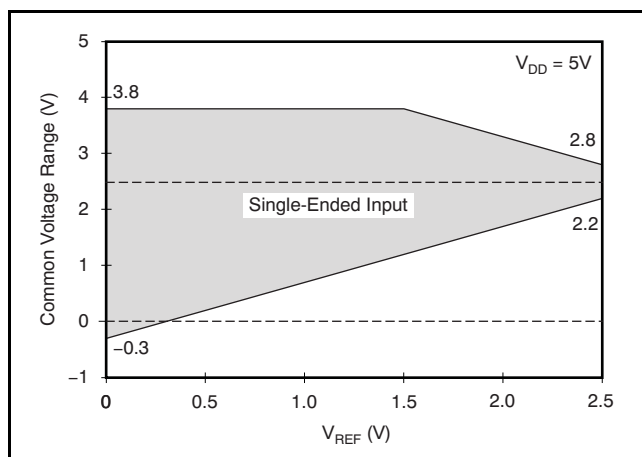
## ANALOG INPUT

The analog input is bipolar and fully differential. There are two general methods of driving the analog input of the ADS8317: single-ended or differential, as shown in Figure 37. When the input is single-ended, the –IN input is held at a fixed voltage. The +IN input swings around the same voltage and the peak-to-peak amplitude is  $2 \times V_{REF}$ . The value of  $V_{REF}$  determines the range over which the common voltage may vary, as shown in Figure 39 and Figure 38.

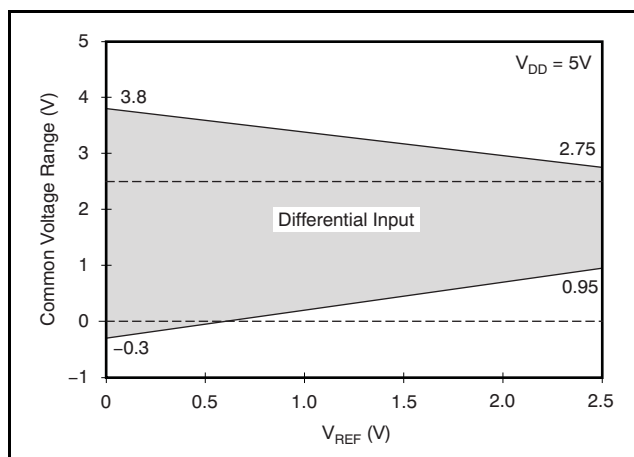


**Figure 37. Methods of Driving the ADS8317—Single-Ended or Differential**

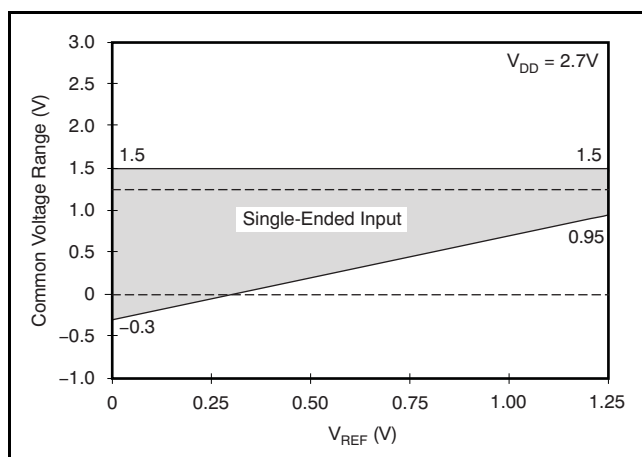




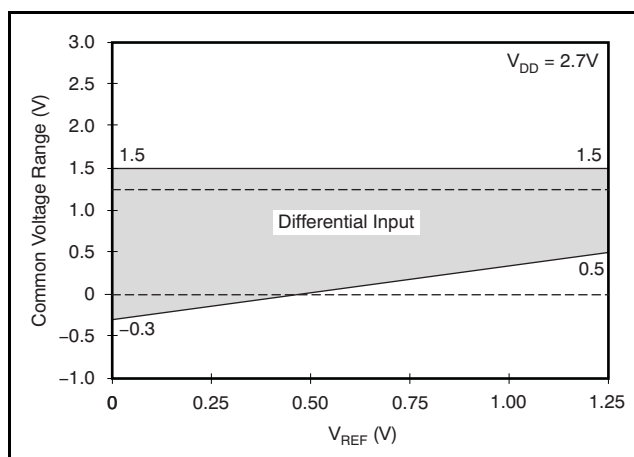
**Figure 38. Single-Ended 5V Input,  
Common Voltage Range vs  $V_{REF}$**



**Figure 40. Differential 2.7V Input,  
Common Voltage Range vs  $V_{REF}$**



**Figure 39. Single-Ended 2.7V Input,  
Common Voltage Range vs  $V_{REF}$**



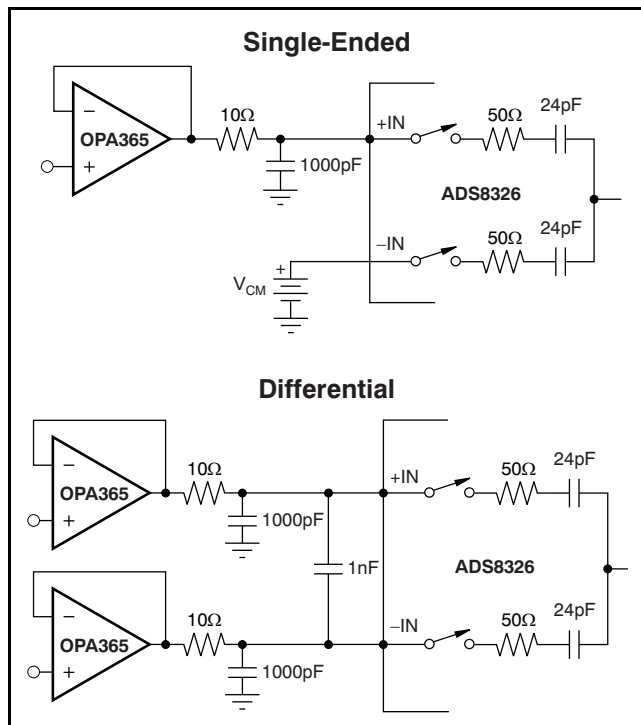
**Figure 41. Differential 2.7V Input,  
Common Voltage Range vs  $V_{REF}$**

When the input is differential, the amplitude of the input is the difference between the +IN and –IN input, or +IN – (–IN). A voltage or signal is common to both of these inputs. The peak-to-peak amplitude of each input is  $V_{REF}$  about this common voltage. However, since the inputs are 180° out-of-phase, the peak-to-peak amplitude of the difference voltage is  $2 \times V_{REF}$ . The value of  $V_{REF}$  also determines the range of the voltage that may be common to both inputs, as shown in [Figure 41](#) and [Figure 40](#).

In each case, care should be taken to ensure that the output impedance of the sources driving the +IN and –IN inputs are matched. If this matching is not observed, the two inputs could have different settling times. This difference may result in offset error, gain error, and linearity error that change with both temperature and input voltage. If the impedance cannot be matched, the errors can be lessened by giving the ADS8317 additional acquisition time.

The input current on the analog inputs depends on a number of factors: sample rate, input voltage, and source impedance. Essentially, the current into the ADS8317 charges the internal capacitor array during the sample period. After this capacitance has been fully charged, there is no further input current. The source of the analog input voltage must be able to charge the input capacitance (24pF) to 16-bit settling level within 4.5 clock cycles. When the converter goes into the hold mode, or while it is in the power-down mode, the input impedance is greater than 1GΩ.

Care must be taken regarding the absolute analog input voltage. The +IN input should always remain within the range of GND – 300mV to  $V_{DD} + 300mV$ . The –IN input should always remain within the range of GND – 300mV to 4V. Outside of these ranges, the converter linearity may not meet specifications. To obtain maximum performance from the ADS8317, an input circuit such as that shown in Figure 42 is recommended.



**Figure 42. Single-Ended and Differential Methods of Interfacing the ADS8317**

## REFERENCE INPUT

The external reference sets the analog input range. The ADS8317 operates with a reference in the range of 0.1V to  $V_{DD}/2$ . There are several important implications to this specification.

As the reference voltage is reduced, the analog voltage weight of each digital output code is reduced. This reduction is often referred to as the least significant bit (LSB) size and is equal to the reference voltage divided by 65,536. This relationship means that any offset or gain error inherent in the A/D converter appears to increase (in terms of LSB size) as the reference voltage is reduced. For a reference voltage of 2.5V, the value of the LSB is 76.3V, and for a reference voltage of 1.25V, the LSB is 38.15μV.

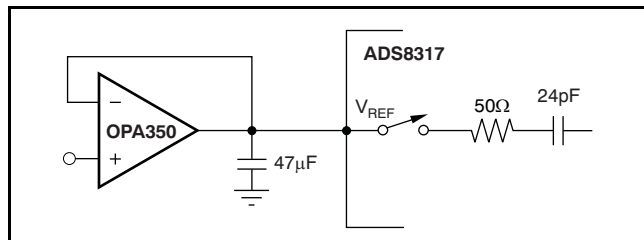
The noise inherent in the converter also appears to increase with a lower LSB size. With a 2.5V reference, the internal noise of the converter typically contributes only 5LSB peak-to-peak of potential error to the output code. When the external reference is 1.25V, the potential error contribution from the internal noise is almost two times larger (9LSB). The errors arising from the internal noise are Gaussian in nature and can be reduced by averaging consecutive conversion results.

For more information regarding noise, consult Figure 18, *Peak-to-Peak Noise for a DC Input vs Reference Voltage*. Note that the Effective Number Of Bits (ENOB) figure is calculated based on the converter signal-to-(noise + distortion) ratio with a 2kHz, 0dB input signal. SINAD is related to ENOB as follows:

$$\text{SINAD} = 6.02 \times \text{ENOB} + 1.76$$

With lower reference voltages, extra care should be taken to provide a clean layout including adequate bypassing, a clean power supply, a low-noise reference, and a low-noise input signal. Due to the lower LSB size, the converter is also more sensitive to external sources of error, such as nearby digital signals and electromagnetic interference.

The equivalent input circuit for the reference voltage is presented in [Figure 43](#). At the same time, an equivalent capacitor of 24pF is switched. To obtain optimum performance from the ADS8317, special care must be taken in designing the interface circuit to the reference input pin. To ensure a stable reference voltage, a 47μF tantalum capacitor with low ESR should be connected as close as possible to the input pin. If a high output impedance reference source is used, an additional operational amplifier with a current-limiting resistor must be placed in front of the capacitors.



**Figure 43. Input Reference Circuit and Interface**

When the ADS8317 is in power-down mode, the input resistance of the reference pin has a value of 5GΩ. Because the input capacitors must be recharged before the next conversion starts, an operational amplifier with good dynamic characteristics, such as the [OPA350](#), should be used to buffer the reference input.

## Noise

The transition noise of the ADS8317 itself is extremely low, as shown in [Figure 19](#) and [Figure 36](#); it is much lower than competing A/D converters. These histograms were generated by applying a low-noise DC input and initiating 8192 conversions. The digital output of the A/D converter varies in output code because of the internal noise of the ADS8317. This variance is true for all 16-bit, SAR-type A/D converters. Using a histogram to plot the output codes, the distribution should appear bell-shaped with the peak of the bell curve representing the nominal code for the input value. The  $\pm 1\sigma$ ,  $\pm 2\sigma$ , and  $\pm 3\sigma$  distributions represent 68.3%, 95.5%, and 99.7%, respectively, of all codes. The transition noise can be calculated by dividing the number of codes measured by 6, which yields the  $3\sigma$  distribution, or 99.7%, of all codes. Statistically, up to three codes could fall outside the distribution when executing 1000 conversions. The ADS8317, with five output codes for the  $\pm 3\sigma$  distribution, yields less than  $\pm 0.8\text{LSB}$  of transition noise. Remember that to achieve this low-noise performance, the peak-to-peak noise of the input signal and reference must be less than 50μV.

## Averaging

The noise of the A/D converter can be compensated by averaging the digital codes. By averaging conversion results, transition noise is reduced by a factor of  $1/\sqrt{n}$ , where  $n$  is the number of averages. For example, averaging four conversion results reduces the transition noise from  $\pm 0.8\text{LSB}$  to  $\pm 0.4\text{LSB}$ . Averaging should only be used for input signals with frequencies near DC.

For AC signals, a digital filter can be used to low-pass filter and decimate the output codes. This configuration works in a similar manner to averaging; for every decimation by 2, the signal-to-noise ratio improves by 3dB.

## DIGITAL INTERFACE

### Signal Levels

The ADS8317 has a wide range of power-supply voltage. The A/D converter, as well as the digital interface circuit, is designed to accept and operate from 2.7V up to 5.5V. This voltage range accommodates different logic levels. When the ADS8317 power-supply voltage is in the range of 4.5V to 5.5V (5V logic level), the ADS8317 can be connected directly to another 5V, CMOS-integrated circuit. When the ADS8317 power-supply voltage is in the range of 2.7V to 3.6V (3V logic level), the ADS8317 can be connected directly to another 3.3V LVCMOS integrated circuit.

### Serial Interface

The ADS8317 communicates with microprocessors and other digital systems via a synchronous 3-wire serial interface, as illustrated in the [Timing Information](#) section and [Timing Characteristics](#). The DCLOCK signal synchronizes the data transfer, with each bit being transmitted on the falling edge of DCLOCK. Most receiving systems capture the bitstream on the rising edge of DCLOCK. However, if the minimum hold time for D<sub>OUT</sub> is acceptable, the system can use the falling edge of DCLOCK to capture each bit.

A falling  $\overline{CS}$  signal initiates the conversion and data transfer. The first 4.5 to 5.0 clock periods of the conversion cycle are used to sample the input signal.

After the fifth falling DCLOCK edge, D<sub>OUT</sub> is enabled and outputs a low value for one clock period. For the next 16 DCLOCK periods, D<sub>OUT</sub> outputs the conversion result, most significant bit first. After the least significant bit (B0) has been output, subsequent clocks repeat the output data, but in a least significant bit first format.

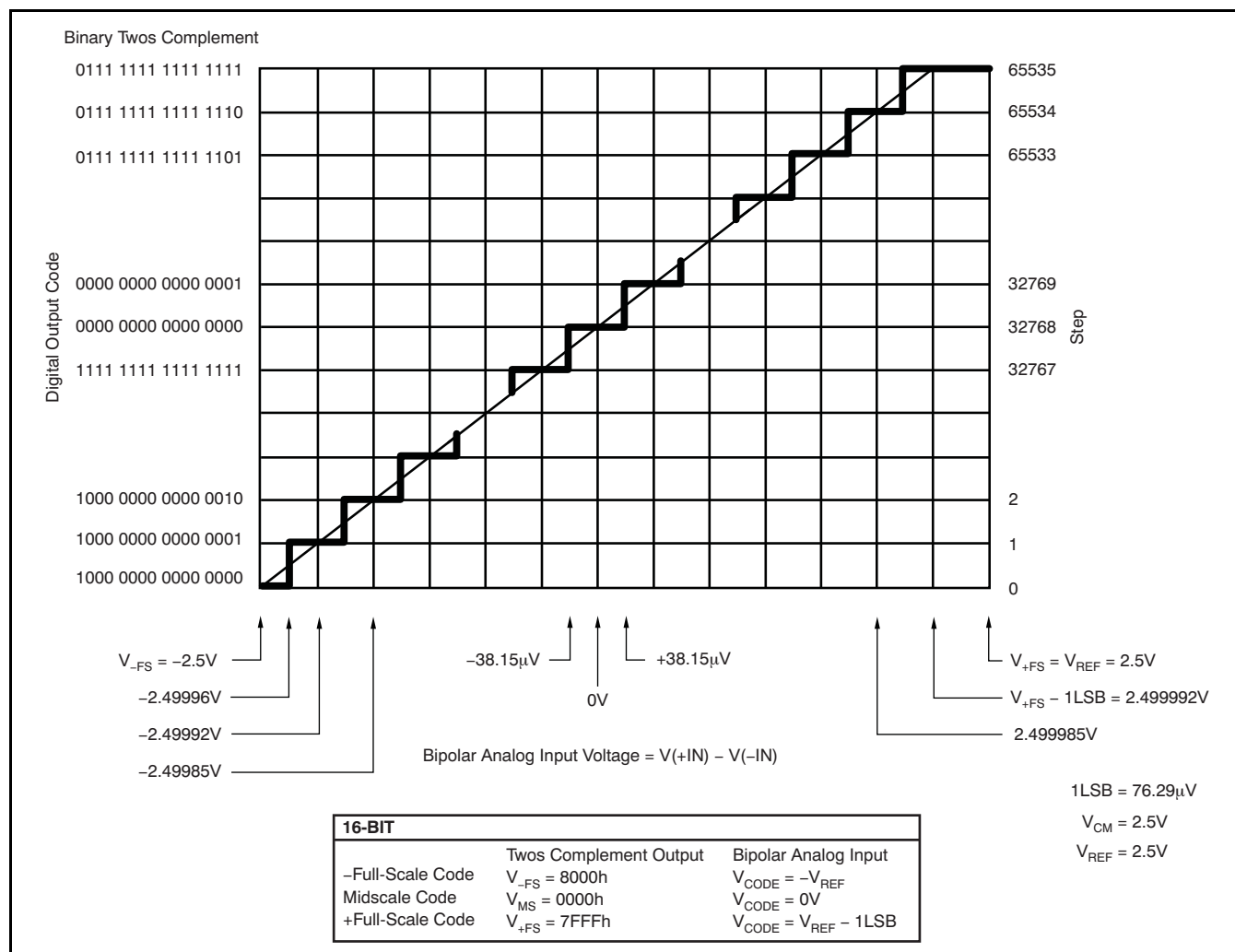
After the most significant bit (B15) has been repeated, D<sub>OUT</sub> will 3-state. Subsequent clocks have no effect on the converter. A new conversion is initiated only when  $\overline{CS}$  has been taken high and returned low.

### Data Format

The output data from the ADS8317 are in binary twos complement format, as shown in [Table 1](#) and [Figure 44](#). The table and figure represent the ideal output code for the given input voltage and do not include the effects of offset, gain error, or noise.

**Table 1. Ideal Input Voltages and Output Codes**

DESCRIPTION	ANALOG VALUE	DIGITAL OUTPUT BINARY TWOS COMPLEMENT	
		Binary Code	Hex Code
Full-scale range	$2 \times V_{REF}$		
Least significant bit (LSB)	$2 \times V_{REF}/65536$		
+Full scale	$+V_{REF} - 1 \text{ LSB}$	0111 1111 1111 1111	7FFF
Midscale	0V	0000 0000 0000 0000	0000
Midscale – 1 LSB	$0V - 1 \text{ LSB}$	1111 1111 1111 1111	FFFF
–Full scale	$-V_{REF}$	1000 0000 0000 0000	8000



**Figure 44. Ideal Conversion Characteristics (Conditions:  $V_{CM} = 2.5V$ ,  $V_{REF} = 2.5V$ )**

## POWER DISSIPATION

The architecture of the converter, the semiconductor fabrication process, and a careful design allow the ADS8317 to convert at up to a 250kHz rate while requiring very little power. However, for the absolute lowest power dissipation, there are several things to keep in mind.

The power dissipation of the ADS8317 scales directly with conversion rate. Therefore, the first step to achieving the lowest power dissipation is to find the lowest conversion rate that satisfies the system requirements.

In addition, the ADS8317 goes into Power-Down mode under two conditions: when the conversion is complete and whenever  $\overline{CS}$  is high (see the Timing Characteristics section). Ideally, each conversion should occur as quickly as possible, preferably at a 6.0MHz clock rate. This way, the converter spends the longest possible time in power-down mode. This is very important because the converter not only uses power on each DCLOCK transition (as is typical for digital CMOS components), but also uses some current for the analog circuitry, such as the comparator. The analog section dissipates power continuously until power-down mode is entered.

[Figure 9](#) and [Figure 27](#) illustrate the current consumption of the ADS8317 versus sample rate. For these graphs, the converter is clocked at maximum speed regardless of the sample rate.  $\overline{CS}$  is held high during the remaining sample period.

There is an important distinction between the power-down mode that is entered after a conversion is complete and the full power-down mode that is enabled when  $\overline{CS}$  is high.  $\overline{CS}$  low only shuts down the analog section. The digital section completely shuts down only when  $\overline{CS}$  is high. Thus, if  $\overline{CS}$  is left low at the end of a conversion, and the converter is continually clocked, the power consumption is not as low as when  $\overline{CS}$  is high.

### Short Cycling

Another way to save power is to use the  $\overline{CS}$  signal to short-cycle the conversion. The ADS8317 places the latest data bit on the  $D_{OUT}$  line as it is generated; therefore, the converter can easily be *short-cycled*. This term means that the conversion can be terminated at any time. For example, if only 14 bits of the conversion result are needed, then the conversion can be terminated (by pulling  $\overline{CS}$  high) after the 14th bit has been clocked out.

This technique can also be used to lower the power dissipation (or to increase the conversion rate) in those applications where an analog signal is being monitored until some condition becomes true. For example, if the signal is outside a predetermined range, the full 16-bit conversion result may not be needed. If so, the conversion can be terminated after the first  $n$  bits, where  $n$  might be as low as 3 or 4. This technique results in lower power dissipation in both the converter and the rest of the system because they spend more time in power-down mode.

## LAYOUT

For optimum performance, care should be taken with the physical layout of the ADS8317 circuitry. This caution is particularly true if the reference voltage is low and/or the conversion rate is high. At a 250kHz conversion rate, the ADS8317 makes a bit decision every 167ns. That is, for each subsequent bit decision, the digital output must be updated with the results of the last bit decision, the capacitor array appropriately switched and charged, and the input to the comparator settled to a 16-bit level, all within one clock cycle.

The basic SAR architecture is sensitive to spikes on the power supply, reference, and ground connections that occur just prior to latching the comparator output. Thus, during any single conversion for an  $n$ -bit SAR converter, there are  $n$  windows in which large external transient voltages can easily affect the conversion result. Such spikes might originate from switching power supplies, digital logic, and high-power devices, to name a few potential sources. This particular source of error can be very difficult to track down if the glitch is almost synchronous to the converter DCLOCK signal because the phase difference between the glitch and DCLOCK changes with time and temperature, causing sporadic misoperation.

With these considerations in mind, power to the ADS8317 should be clean and well-bypassed. A 0.1 $\mu$ F ceramic bypass capacitor should be placed as close as possible to the ADS8317 package. In addition, a 1 $\mu$ F to 10 $\mu$ F capacitor and a 5 $\Omega$  or 10 $\Omega$  series resistor may be used to low-pass filter a noisy supply.

The reference should be similarly bypassed with a 47 $\mu$ F capacitor. Again, a series resistor and large capacitor can be used to low-pass filter the reference voltage. If the reference voltage originates from an op amp, make sure that the op amp can drive the bypass capacitor without oscillation (the series resistor can help in this case). Keep in mind that while the ADS8317 draws very little current from the reference on average, there are still instantaneous current demands placed on the external input and reference circuitry.

Texas Instruments' [OPA365](#) op amp provides optimum performance for buffering the signal inputs; the [OPA350](#) can be used to effectively buffer the reference input.

Also, keep in mind that the ADS8317 offers no inherent rejection of noise or voltage variation in regards to the reference input. This characteristic is of particular concern when the reference input is tied to the power supply. Any noise and ripple from the supply appears directly in the digital results. While high-frequency noise can be filtered out, as described in the previous paragraph, voltage variation resulting from the line frequency (50Hz or 60Hz) can be difficult to remove.

The GND pin on the ADS8317 should be placed on a clean ground point. In many cases, this point is the analog ground. Avoid connecting the GND pin too close to the grounding point for a microprocessor, microcontroller, or digital signal processor. If needed, run a ground trace directly from the converter to the power-supply connection point. The ideal layout includes an analog ground plane for the converter and associated analog circuitry.

## APPLICATION CIRCUITS

Figure 45 shows an example of a basic data acquisition system. The ADS8317 input range is connected to 2.5V or 4.096V. The 5Ω resistor and 1μF to 10μF capacitor filters the microcontroller noise

on the supply, as well as any high-frequency noise from the supply itself. The exact values should be picked such that the filter provides adequate rejection of noise. Operational amplifiers and voltage reference are connected to the analog power supply,  $AV_{DD}$ .

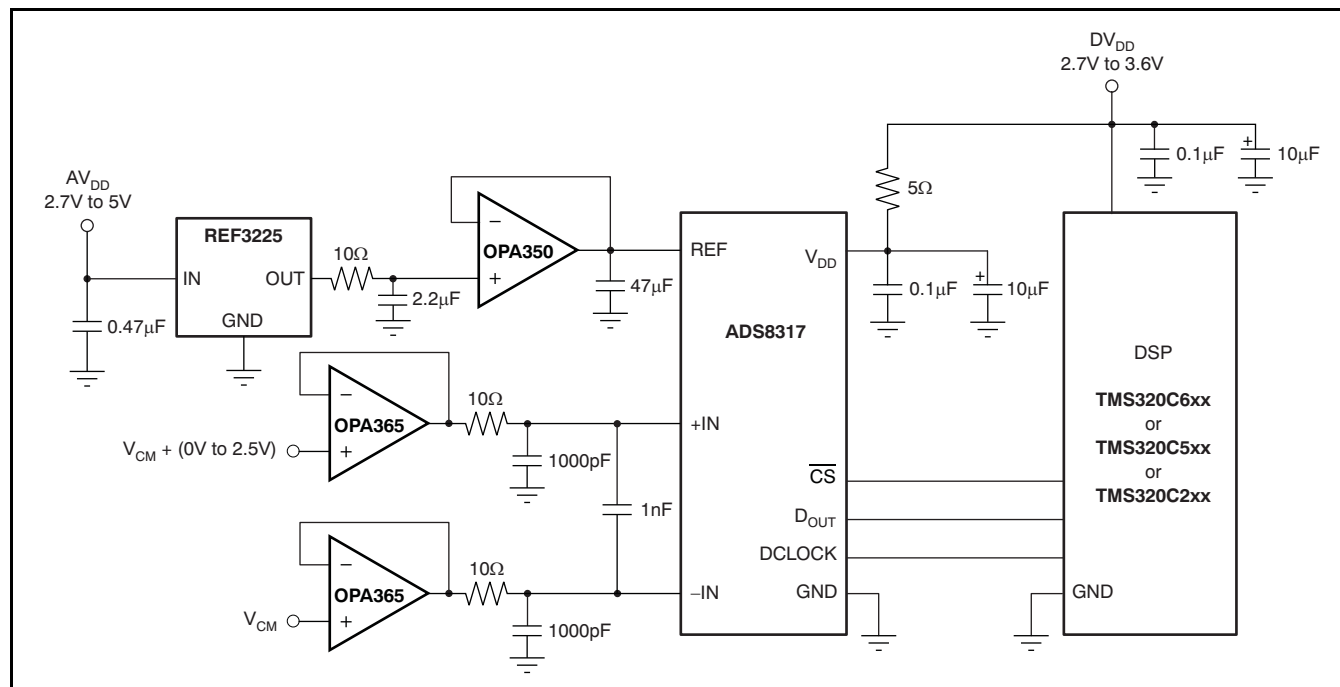


Figure 45. Example of a Basic Data Acquisition System



## PACKAGING INFORMATION

Orderable Device	Status <sup>(1)</sup>	Package Type	Package Drawing	Pins	Package Qty	Eco Plan <sup>(2)</sup>	Lead/Ball Finish	MSL Peak Temp <sup>(3)</sup>
ADS8317IBDGKR	ACTIVE	MSOP	DGK	8	2500	Green (RoHS & no Sb/Br)	CU NIPDAU	Level-2-260C-1 YEAR
ADS8317IBDGKRG4	ACTIVE	MSOP	DGK	8	2500	Green (RoHS & no Sb/Br)	CU NIPDAU	Level-2-260C-1 YEAR
ADS8317IBDGKT	ACTIVE	MSOP	DGK	8	250	Green (RoHS & no Sb/Br)	CU NIPDAU	Level-2-260C-1 YEAR
ADS8317IBDGKTG4	ACTIVE	MSOP	DGK	8	250	Green (RoHS & no Sb/Br)	CU NIPDAU	Level-2-260C-1 YEAR
ADS8317IDGKR	ACTIVE	MSOP	DGK	8	2500	Green (RoHS & no Sb/Br)	CU NIPDAU	Level-2-260C-1 YEAR
ADS8317IDGKRG4	ACTIVE	MSOP	DGK	8	2500	Green (RoHS & no Sb/Br)	CU NIPDAU	Level-2-260C-1 YEAR
ADS8317IDGKT	ACTIVE	MSOP	DGK	8	250	Green (RoHS & no Sb/Br)	CU NIPDAU	Level-2-260C-1 YEAR
ADS8317IDGKTG4	ACTIVE	MSOP	DGK	8	250	Green (RoHS & no Sb/Br)	CU NIPDAU	Level-2-260C-1 YEAR

<sup>(1)</sup> The marketing status values are defined as follows:

**ACTIVE:** Product device recommended for new designs.

**LIFEBUY:** TI has announced that the device will be discontinued, and a lifetime-buy period is in effect.

**NRND:** Not recommended for new designs. Device is in production to support existing customers, but TI does not recommend using this part in a new design.

**PREVIEW:** Device has been announced but is not in production. Samples may or may not be available.

**OBSELETE:** TI has discontinued the production of the device.

<sup>(2)</sup> Eco Plan - The planned eco-friendly classification: Pb-Free (RoHS), Pb-Free (RoHS Exempt), or Green (RoHS & no Sb/Br) - please check <http://www.ti.com/productcontent> for the latest availability information and additional product content details.

**TBD:** The Pb-Free/Green conversion plan has not been defined.

**Pb-Free (RoHS):** TI's terms "Lead-Free" or "Pb-Free" mean semiconductor products that are compatible with the current RoHS requirements for all 6 substances, including the requirement that lead not exceed 0.1% by weight in homogeneous materials. Where designed to be soldered at high temperatures, TI Pb-Free products are suitable for use in specified lead-free processes.

**Pb-Free (RoHS Exempt):** This component has a RoHS exemption for either 1) lead-based flip-chip solder bumps used between the die and package, or 2) lead-based die adhesive used between the die and leadframe. The component is otherwise considered Pb-Free (RoHS compatible) as defined above.

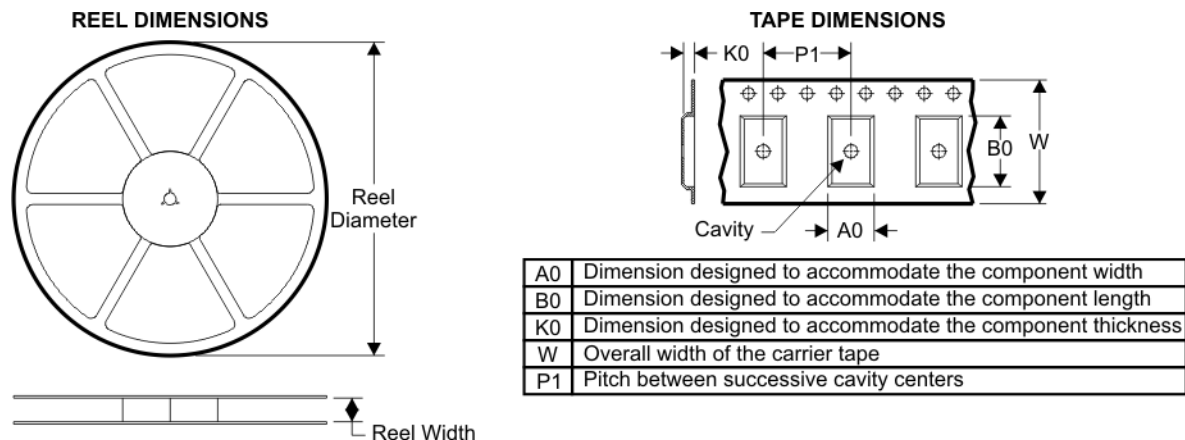
**Green (RoHS & no Sb/Br):** TI defines "Green" to mean Pb-Free (RoHS compatible), and free of Bromine (Br) and Antimony (Sb) based flame retardants (Br or Sb do not exceed 0.1% by weight in homogeneous material)

<sup>(3)</sup> MSL, Peak Temp. -- The Moisture Sensitivity Level rating according to the JEDEC industry standard classifications, and peak solder temperature.

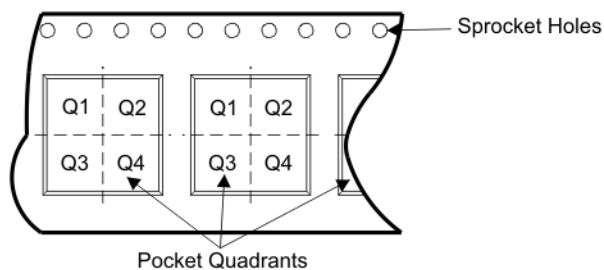
**Important Information and Disclaimer:** The information provided on this page represents TI's knowledge and belief as of the date that it is provided. TI bases its knowledge and belief on information provided by third parties, and makes no representation or warranty as to the accuracy of such information. Efforts are underway to better integrate information from third parties. TI has taken and continues to take reasonable steps to provide representative and accurate information but may not have conducted destructive testing or chemical analysis on incoming materials and chemicals. TI and TI suppliers consider certain information to be proprietary, and thus CAS numbers and other limited information may not be available for release.

In no event shall TI's liability arising out of such information exceed the total purchase price of the TI part(s) at issue in this document sold by TI to Customer on an annual basis.

**TAPE AND REEL BOX INFORMATION**



**QUADRANT ASSIGNMENTS FOR PIN 1 ORIENTATION IN TAPE**



Device	Package	Pins	Site	Reel Diameter (mm)	Reel Width (mm)	A0 (mm)	B0 (mm)	K0 (mm)	P1 (mm)	W (mm)	Pin1 Quadrant
ADS8317IBDGKR	DGK	8	SITE 60	330	12	5.3	3.4	1.4	8	12	Q1
ADS8317IBDGKT	DGK	8	SITE 60	330	12	5.3	3.4	1.4	8	12	Q1
ADS8317IDGKR	DGK	8	SITE 60	330	12	5.3	3.4	1.4	8	12	Q1
ADS8317IDGKT	DGK	8	SITE 60	330	12	5.3	3.4	1.4	8	12	Q1

## TAPE AND REEL BOX DIMENSIONS



Device	Package	Pins	Site	Length (mm)	Width (mm)	Height (mm)
ADS8317IBDGKR	DGK	8	SITE 60	346.0	346.0	29.0
ADS8317IBDGKT	DGK	8	SITE 60	346.0	346.0	29.0
ADS8317IDGKR	DGK	8	SITE 60	346.0	346.0	29.0
ADS8317IDGKT	DGK	8	SITE 60	346.0	346.0	29.0

## DGK (S-PDSO-G8)

## PLASTIC SMALL-OUTLINE PACKAGE



## NOTES:

- A. All linear dimensions are in millimeters.
- B. This drawing is subject to change without notice.
- C. Body length does not include mold flash, protrusions, or gate burrs. Mold flash, protrusions, or gate burrs shall not exceed 0.15 per end.
- D. Body width does not include interlead flash. Interlead flash shall not exceed 0.50 per side.
- E. Falls within JEDEC MO-187 variation AA, except interlead flash.

## IMPORTANT NOTICE

Texas Instruments Incorporated and its subsidiaries (TI) reserve the right to make corrections, modifications, enhancements, improvements, and other changes to its products and services at any time and to discontinue any product or service without notice. Customers should obtain the latest relevant information before placing orders and should verify that such information is current and complete. All products are sold subject to TI's terms and conditions of sale supplied at the time of order acknowledgment.

TI warrants performance of its hardware products to the specifications applicable at the time of sale in accordance with TI's standard warranty. Testing and other quality control techniques are used to the extent TI deems necessary to support this warranty. Except where mandated by government requirements, testing of all parameters of each product is not necessarily performed.

TI assumes no liability for applications assistance or customer product design. Customers are responsible for their products and applications using TI components. To minimize the risks associated with customer products and applications, customers should provide adequate design and operating safeguards.

TI does not warrant or represent that any license, either express or implied, is granted under any TI patent right, copyright, mask work right, or other TI intellectual property right relating to any combination, machine, or process in which TI products or services are used. Information published by TI regarding third-party products or services does not constitute a license from TI to use such products or services or a warranty or endorsement thereof. Use of such information may require a license from a third party under the patents or other intellectual property of the third party, or a license from TI under the patents or other intellectual property of TI.

Reproduction of TI information in TI data books or data sheets is permissible only if reproduction is without alteration and is accompanied by all associated warranties, conditions, limitations, and notices. Reproduction of this information with alteration is an unfair and deceptive business practice. TI is not responsible or liable for such altered documentation. Information of third parties may be subject to additional restrictions.

Resale of TI products or services with statements different from or beyond the parameters stated by TI for that product or service voids all express and any implied warranties for the associated TI product or service and is an unfair and deceptive business practice. TI is not responsible or liable for any such statements.

TI products are not authorized for use in safety-critical applications (such as life support) where a failure of the TI product would reasonably be expected to cause severe personal injury or death, unless officers of the parties have executed an agreement specifically governing such use. Buyers represent that they have all necessary expertise in the safety and regulatory ramifications of their applications, and acknowledge and agree that they are solely responsible for all legal, regulatory and safety-related requirements concerning their products and any use of TI products in such safety-critical applications, notwithstanding any applications-related information or support that may be provided by TI. Further, Buyers must fully indemnify TI and its representatives against any damages arising out of the use of TI products in such safety-critical applications.

TI products are neither designed nor intended for use in military/aerospace applications or environments unless the TI products are specifically designated by TI as military-grade or "enhanced plastic." Only products designated by TI as military-grade meet military specifications. Buyers acknowledge and agree that any such use of TI products which TI has not designated as military-grade is solely at the Buyer's risk, and that they are solely responsible for compliance with all legal and regulatory requirements in connection with such use.

TI products are neither designed nor intended for use in automotive applications or environments unless the specific TI products are designated by TI as compliant with ISO/TS 16949 requirements. Buyers acknowledge and agree that, if they use any non-designated products in automotive applications, TI will not be responsible for any failure to meet such requirements.

Following are URLs where you can obtain information on other Texas Instruments products and application solutions:

Products		Applications	
Amplifiers	<a href="http://amplifier.ti.com">amplifier.ti.com</a>	Audio	<a href="http://www.ti.com/audio">www.ti.com/audio</a>
Data Converters	<a href="http://dataconverter.ti.com">dataconverter.ti.com</a>	Automotive	<a href="http://www.ti.com/automotive">www.ti.com/automotive</a>
DSP	<a href="http://dsp.ti.com">dsp.ti.com</a>	Broadband	<a href="http://www.ti.com/broadband">www.ti.com/broadband</a>
Interface	<a href="http://interface.ti.com">interface.ti.com</a>	Digital Control	<a href="http://www.ti.com/digitalcontrol">www.ti.com/digitalcontrol</a>
Logic	<a href="http://logic.ti.com">logic.ti.com</a>	Military	<a href="http://www.ti.com/military">www.ti.com/military</a>
Power Mgmt	<a href="http://power.ti.com">power.ti.com</a>	Optical Networking	<a href="http://www.ti.com/opticalnetwork">www.ti.com/opticalnetwork</a>
Microcontrollers	<a href="http://microcontroller.ti.com">microcontroller.ti.com</a>	Security	<a href="http://www.ti.com/security">www.ti.com/security</a>
RFID	<a href="http://www.ti-rfid.com">www.ti-rfid.com</a>	Telephony	<a href="http://www.ti.com/telephony">www.ti.com/telephony</a>
Low Power Wireless	<a href="http://www.ti.com/lpw">www.ti.com/lpw</a>	Video & Imaging	<a href="http://www.ti.com/video">www.ti.com/video</a>
		Wireless	<a href="http://www.ti.com/wireless">www.ti.com/wireless</a>

Mailing Address: Texas Instruments, Post Office Box 655303, Dallas, Texas 75265  
Copyright © 2007, Texas Instruments Incorporated