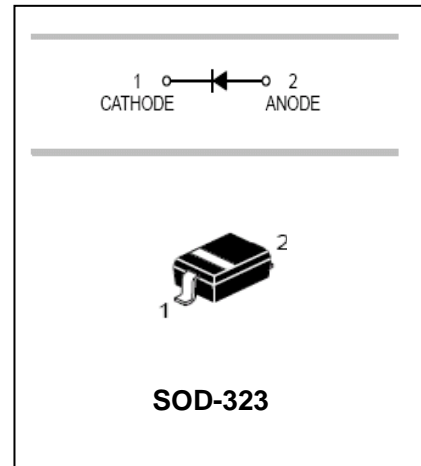


## Silicon Epitaxial Planar Diode

## 1SS404

### FEATURES

- Small surface mounting type
- Fast reverse recovery time:  $I_R=50\mu\text{A}(\text{Max.})$
- Small total capacitance :  $C_T=46\text{pF}(\text{typ.})$
- Excellent in forward current and forward voltage characteristics :  $V_F=0.8\text{V}(\text{Typ.})$



### APPLICATIONS

- High speed switching

### ORDERING INFORMATION

| Type No. | Marking | Package Code |
|----------|---------|--------------|
| 1SS404   | S51     | SOD-323      |

### MAXIMUM RATING @ $T_a=25^\circ\text{C}$ unless otherwise specified

| Parameter                        | Symbol    | Limits      | Unit             |
|----------------------------------|-----------|-------------|------------------|
| Peak reverse voltage             | $V_{RM}$  | 25          | V                |
| DC Reverse Voltage               | $V_R$     | 20          | V                |
| Average Rectified Output Current | $I_O$     | 300         | mA               |
| Power Dissipation                | $P_D$     | 200         | mW               |
| Junction temperature             | $T_j$     | 125         | $^\circ\text{C}$ |
| Storage temperature              | $T_{STG}$ | -55 to +125 | $^\circ\text{C}$ |

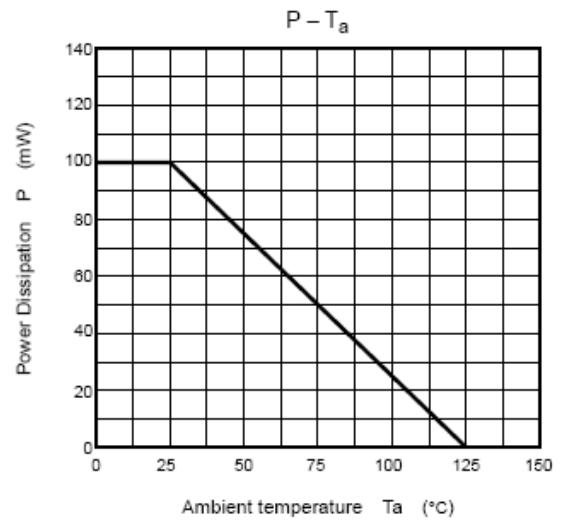
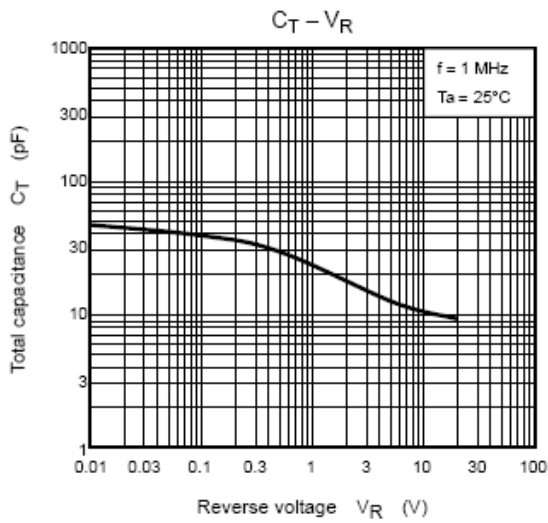
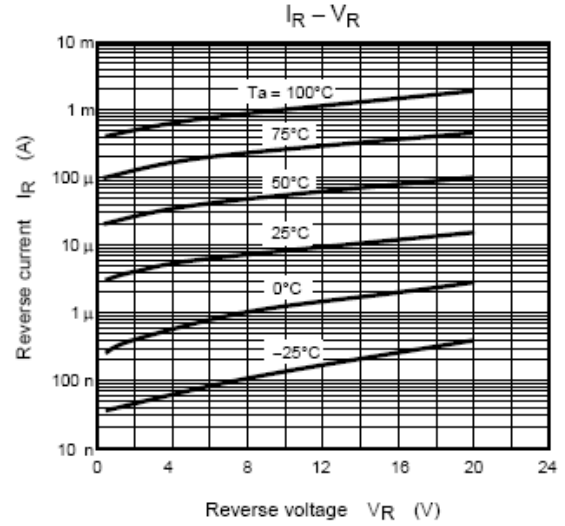
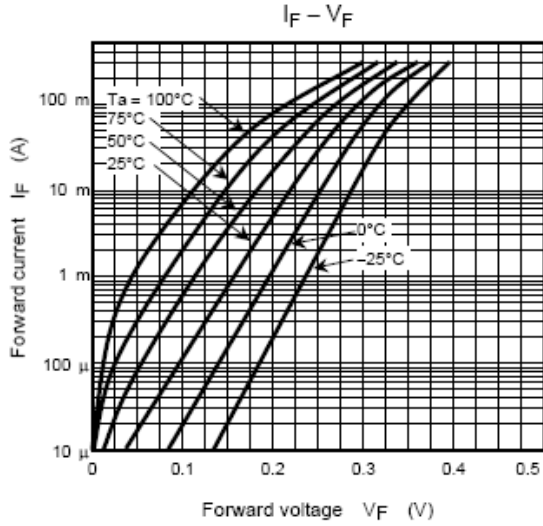
### ELECTRICAL CHARACTERISTICS @ $T_a=25^\circ\text{C}$ unless otherwise specified

| Parameter                     | Symbol | Min. | TYP. | Max. | Unit          | Conditions                     |
|-------------------------------|--------|------|------|------|---------------|--------------------------------|
| Forward voltage               | $V_F$  |      | 0.16 |      | V             | $I_F=1\text{mA}$               |
|                               |        |      | 0.22 |      |               | $I_F=10\text{mA}$              |
|                               |        |      | 0.38 | 0.45 |               | $I_F=300\text{mA}$             |
| Reverse current               | $I_R$  |      |      | 50   | $\mu\text{A}$ | $V_R=20\text{V}$               |
| Capacitance between terminals | $C_T$  |      |      | 46   | pF            | $V_R=0\text{V}, f=1\text{MHz}$ |

# Silicon Epitaxial Planar Diode

# 1SS404

TYPICAL CHARACTERISTICS @  $T_a=25^\circ\text{C}$  unless otherwise specified



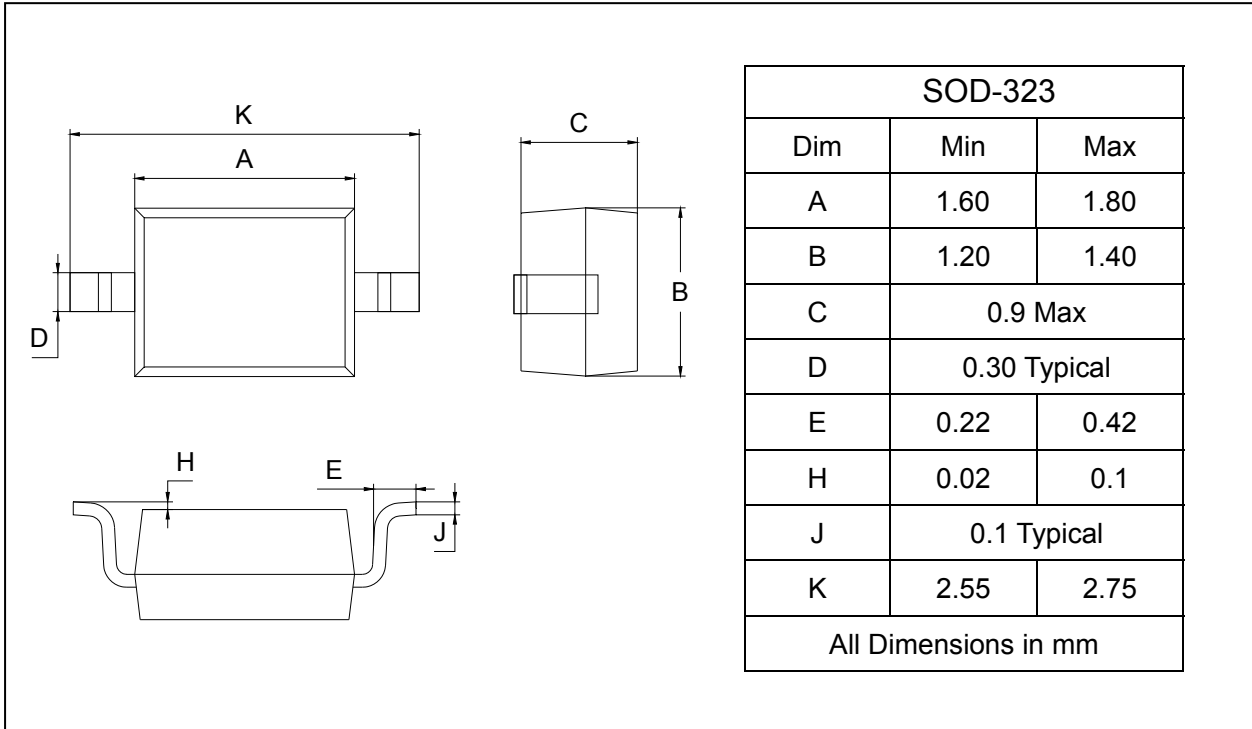
## Silicon Epitaxial Planar Diode

## 1SS404

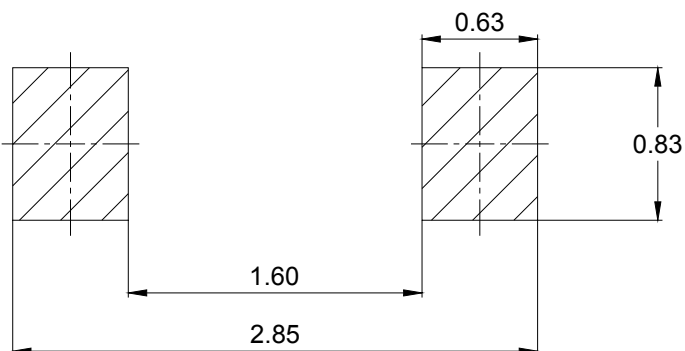
### PACKAGE OUTLINE

Plastic surface mounted package

SOD-323



### SOLDERING FOOTPRINT



Unit : mm

### PACKAGE INFORMATION

| Device | Package | Shipping       |
|--------|---------|----------------|
| 1SS404 | SOD-323 | 3000/Tape&Reel |